



[Go to Product page](#)

Datasheet for ABIN563548

anti-PHAP1 antibody (AA 1-249)

1 Image

Overview

Quantity:	50 µL
Target:	PHAP1 (ANP32A)
Binding Specificity:	AA 1-249
Reactivity:	Human
Host:	Mouse
Clonality:	Polyclonal
Conjugate:	This PHAP1 antibody is un-conjugated
Application:	Western Blotting (WB), ELISA

Product Details

Purpose:	Mouse polyclonal antibody raised against a full-length recombinant ANP32A.
Immunogen:	ANP32A (AAH07200, 1 a.a. ~ 249 a.a) full-length recombinant protein with GST tag.
Sequence:	MEMGRRIHLE LRNRTPSDVK ELVLDNSRSN EGKLEGLTDE FEELEFLSTI NVGLTSIANL PKLNKLEKLE LSDNRVSGGL EVLAEKCPNL THLNLSGNKI KDLSTIEPLK KLENLKSLLD FNCEVTNLND YRENVFKLLP QLTYLDGYDR DDKEAPDSA EGYVEGLDDE EEDEDEEEYD EDAQVVEDEE DEDEEEEGEE EDVSGEEEEE EEGYNDGEVD DEEDEEELGE EERGQKRKRE PEDEGEDDD
Cross-Reactivity:	Human
Characteristics:	Antibody Reactive Against Recombinant Protein.

Target Details

Target:	PHAP1 (ANP32A)
Alternative Name:	ANP32A (ANP32A Products)
Background:	Full Gene Name: acidic (leucine-rich) nuclear phosphoprotein 32 family, member A Synonyms: C15orf1,I1PP2A,LANP,MAPM,MGC119787,MGC150373,PHAP1,PHAPI,PP32
Gene ID:	8125

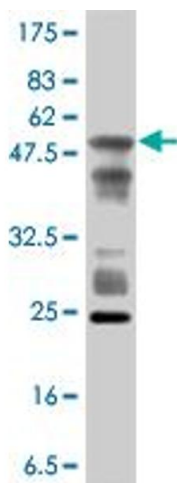
Application Details

Application Notes:	Optimal working dilution should be determined by the investigator.
Restrictions:	For Research Use only

Handling

Format:	Liquid
Buffer:	50 % glycerol
Handling Advice:	Aliquot to avoid repeated freezing and thawing.
Storage:	-20 °C
Storage Comment:	Store at -20°C or lower. Aliquot to avoid repeated freezing and thawing.

Images



Western Blotting

Image 1. Western Blot detection against Immunogen (53.5 kDa) .