

Datasheet for ABIN563555

**anti-Solute Carrier Family 14 (Urea Transporter, Kidney)
Member 2 (SLC14A2) (AA 40-128) antibody**[Go to Product page](#)**1** Image

Overview

Quantity:	100 µg
Target:	Solute Carrier Family 14 (Urea Transporter, Kidney) Member 2 (SLC14A2)
Binding Specificity:	AA 40-128
Reactivity:	Human
Host:	Mouse
Clonality:	Monoclonal
Conjugate:	Un-conjugated
Application:	ELISA

Product Details

Purpose:	Mouse monoclonal antibody raised against a partial recombinant SLC14A2.
Immunogen:	SLC14A2 (NP_009094, 40 a.a. ~ 128 a.a) partial recombinant protein with GST tag. MW of the GST tag alone is 26 KDa.
Sequence:	ALPLLEMPEE KDLRSSNEDS HIVKIEKLNE RSKRKDDGVA HRDSAGQRCI CLSKAVGYLT GDMKEYRIWL KDKHLALQFI DWVLRGTAQ
Clone:	3E7
Isotype:	IgG2a
Cross-Reactivity:	Human
Characteristics:	Antibody Reactive Against Recombinant Protein.

Target Details

Target:	Solute Carrier Family 14 (Urea Transporter, Kidney) Member 2 (SLC14A2)
Alternative Name:	SLC14A2 (SLC14A2 Products)
Background:	Full Gene Name: solute carrier family 14 (urea transporter), member 2 Synonyms: FLJ16167,HUT2,MGC119566,MGC119567,UT-A2,UT2,UTA,UTR,hUT-A6
Gene ID:	8170
NCBI Accession:	NM_007163
Pathways:	Response to Water Deprivation

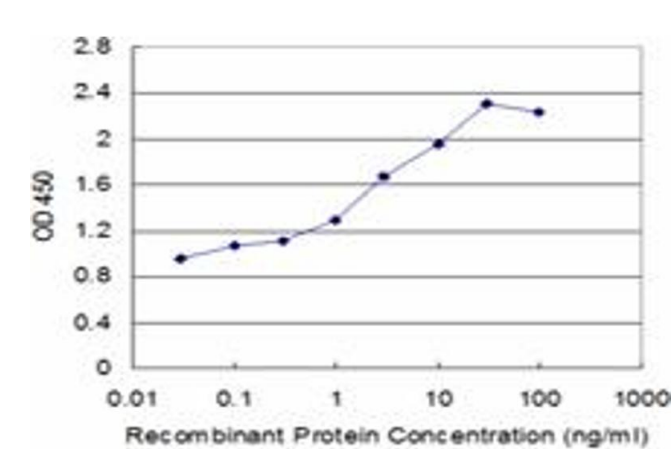
Application Details

Application Notes:	Optimal working dilution should be determined by the investigator.
Restrictions:	For Research Use only

Handling

Buffer:	In 1x PBS, pH 7.4
Handling Advice:	Aliquot to avoid repeated freezing and thawing.
Storage:	-20 °C
Storage Comment:	Store at -20°C or lower. Aliquot to avoid repeated freezing and thawing.

Images



ELISA

Image 1. Detection limit for recombinant GST tagged SLC14A2 is approximately 1ng/ml as a capture antibody.