



Datasheet for ABIN563559
anti-CLPP antibody (AA 178-277)



[Go to Product page](#)

1 Image

Overview

Quantity:	50 µL
Target:	CLPP
Binding Specificity:	AA 178-277
Reactivity:	Human
Host:	Mouse
Clonality:	Polyclonal
Conjugate:	This CLPP antibody is un-conjugated
Application:	Western Blotting (WB), ELISA

Product Details

Purpose:	Mouse polyclonal antibody raised against a partial recombinant CLPP.
Immunogen:	CLPP (NP_006003, 178 a.a. ~ 277 a.a) partial recombinant protein with GST tag.
Sequence:	HQPSGGARGQ ATDIAIQAE IMKLKKQLYN IYAKHTKQSL QVIESAMERD RYMSPMEAEQ FGILDKVLVH PPQDGEDEPT LVQKEPVEAA PAAEPVPAST
Cross-Reactivity:	Human
Characteristics:	Antibody Reactive Against Recombinant Protein.

Target Details

Target:	CLPP
Alternative Name:	CLPP (CLPP Products)

Target Details

Background:	Full Gene Name: ClpP caseinolytic peptidase, ATP-dependent, proteolytic subunit homolog (E. coli) Synonyms:
Gene ID:	8192
NCBI Accession:	NM_006012

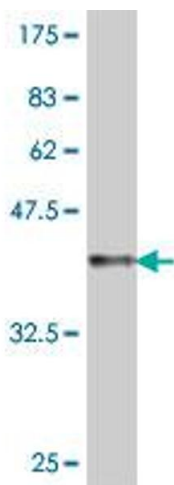
Application Details

Application Notes:	Optimal working dilution should be determined by the investigator.
Restrictions:	For Research Use only

Handling

Format:	Liquid
Buffer:	50 % glycerol
Handling Advice:	Aliquot to avoid repeated freezing and thawing.
Storage:	-20 °C
Storage Comment:	Store at -20°C or lower. Aliquot to avoid repeated freezing and thawing.

Images



Western Blotting

Image 1. Western Blot detection against Immunogen (37.11 kDa) .