

Datasheet for ABIN563572  
**anti-SMC1A antibody (AA 366-465)**[Go to Product page](#)

## 3 Images

## Overview

Quantity:	100 µg
Target:	SMC1A
Binding Specificity:	AA 366-465
Reactivity:	Human
Host:	Mouse
Clonality:	Monoclonal
Conjugate:	This SMC1A antibody is un-conjugated
Application:	Western Blotting (WB), ELISA, Immunohistochemistry (Paraffin-embedded Sections) (IHC (p))

## Product Details

Purpose:	Mouse monoclonal antibody raised against a partial recombinant SMC1L1.
Immunogen:	SMC1L1 (NP_006297, 366 a.a. ~ 465 a.a) partial recombinant protein with GST tag. MW of the GST tag alone is 26 KDa.
Sequence:	TLEENQVKKY HRLKEEASKR AATLAQELEK FNRDQKADQD RLDLEERKKV ETEAKIKQKL REIEENQKRI EKLEEYITTS KQSLEEQKKL EGELTEEVEM
Clone:	1B9
Isotype:	IgG1
Cross-Reactivity:	Human
Characteristics:	Antibody Reactive Against Recombinant Protein.

Target Details

Target:	SMC1A
Alternative Name:	SMC1A (SMC1A Products)
Background:	Full Gene Name: structural maintenance of chromosomes 1A Synonyms: CDLS2,DKFZp686L19178,DXS423E,KIAA0178,MGC138332,SB1.8,SMC1,SMC1L1,SMC1alpha,SMCB
Gene ID:	8243
NCBI Accession:	NM_006306
Pathways:	Stem Cell Maintenance

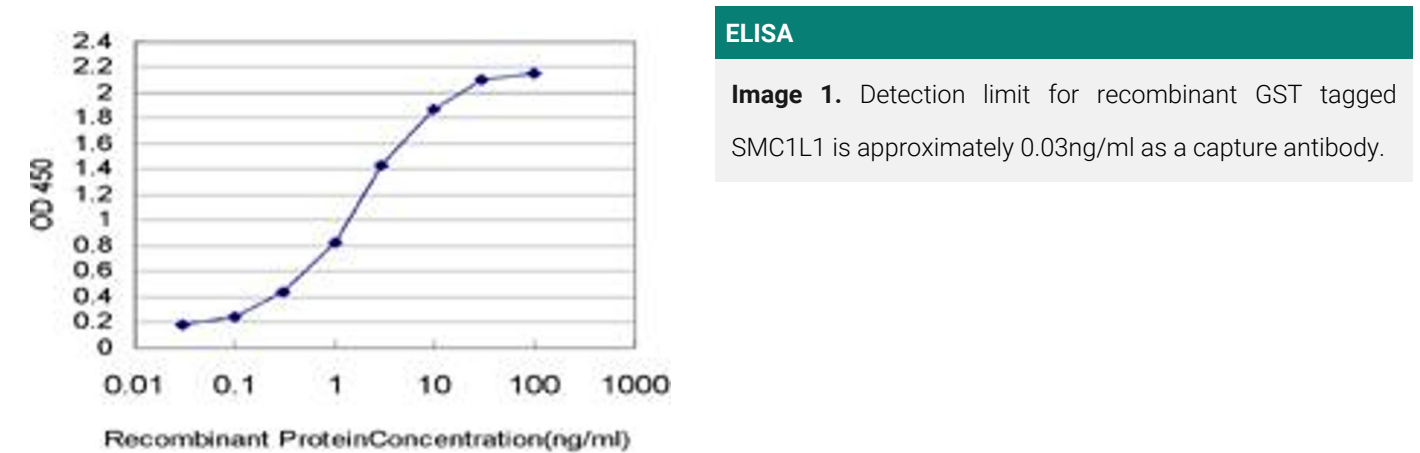
Application Details

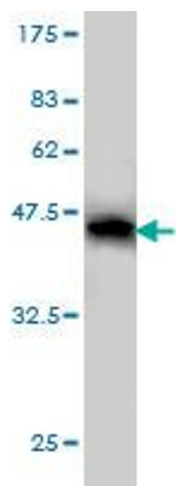
Application Notes:	Optimal working dilution should be determined by the investigator.
Restrictions:	For Research Use only

Handling

Buffer:	In 1x PBS, pH 7.4
Handling Advice:	Aliquot to avoid repeated freezing and thawing.
Storage:	-20 °C
Storage Comment:	Store at -20°C or lower. Aliquot to avoid repeated freezing and thawing.

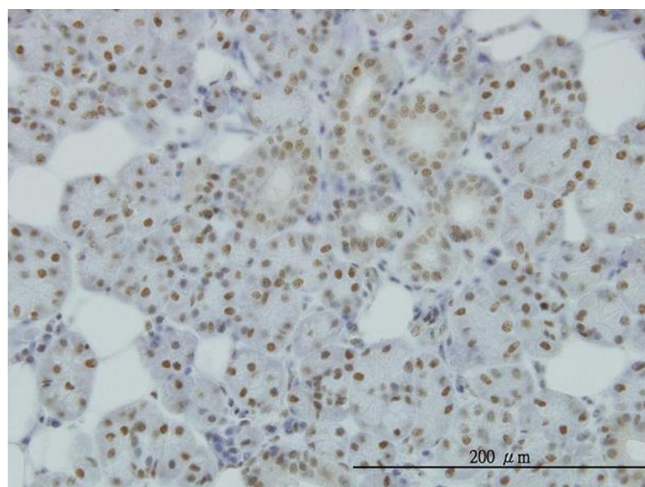
Images





### Western Blotting

**Image 2.** Western Blot detection against Immunogen (36.74 KDa) .



### Immunostaining

**Image 3.** Immunoperoxidase of monoclonal antibody to SMC1L1 on formalin-fixed paraffin-embedded human salivary gland. [antibody concentration 1 ug/ml]