



[Go to Product page](#)

Datasheet for ABIN563595

anti-HIST2H2AA3 antibody (AA 1-130)

2 Images

Overview

| | |
|----------------------|---|
| Quantity: | 100 µg |
| Target: | HIST2H2AA3 |
| Binding Specificity: | AA 1-130 |
| Reactivity: | Human |
| Host: | Mouse |
| Clonality: | Monoclonal |
| Conjugate: | This HIST2H2AA3 antibody is un-conjugated |
| Application: | Western Blotting (WB), ELISA, Immunofluorescence (IF) |

Product Details

| | |
|-------------------|---|
| Purpose: | Mouse monoclonal antibody raised against a full length recombinant HIST2H2AA. |
| Immunogen: | HIST2H2AA (AAH01629, 1 a.a. ~ 130 a.a) full-length recombinant protein with GST tag. MW of the GST tag alone is 26 KDa. |
| Sequence: | MSGRGKQGGK ARAKAKSRSS RAGLQFPVGR VHLLLRKGN Y AERVGAGAPV YMAAVLEYLT AEILELAGNA ARDNKKTRII PRHLQLAIRN DEELNKLLGK VTIAQGGVLP NIQAVLLPKK TESHHKAKGK |
| Clone: | 4C10 |
| Isotype: | IgG2a |
| Cross-Reactivity: | Human |
| Characteristics: | Antibody Reactive Against Recombinant Protein. |

Target Details

| | |
|-------------------|---|
| Target: | HIST2H2AA3 |
| Alternative Name: | HIST2H2AA3 (HIST2H2AA3 Products) |
| Background: | Full Gene Name: histone cluster 2, H2aa3 Synonyms: H2A,H2A.2,H2A/O,H2A/q,H2AFO,H2a-615,HIST2H2AA |
| Gene ID: | 8337 |
| Pathways: | Telomere Maintenance |

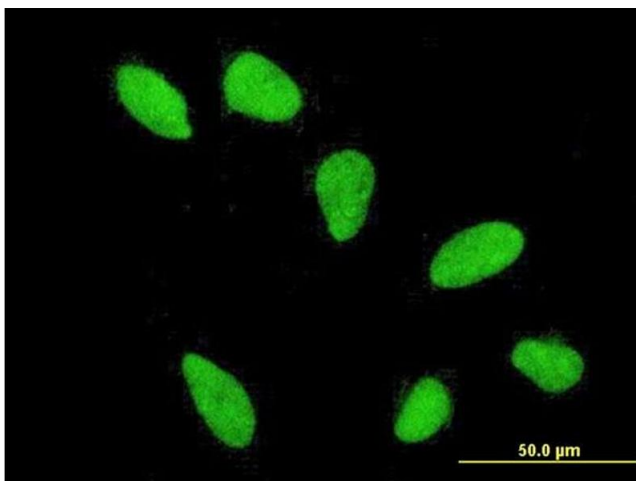
Application Details

| | |
|--------------------|--|
| Application Notes: | Optimal working dilution should be determined by the investigator. |
| Restrictions: | For Research Use only |

Handling

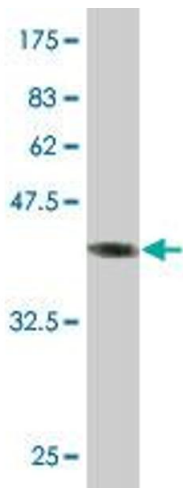
| | |
|------------------|--|
| Buffer: | In 1x PBS, pH 7.4 |
| Handling Advice: | Aliquot to avoid repeated freezing and thawing. |
| Storage: | -20 °C |
| Storage Comment: | Store at -20°C or lower. Aliquot to avoid repeated freezing and thawing. |

Images



Immunofluorescence

Image 1. Immunofluorescence of monoclonal antibody to HIST2H2AA3 on HeLa cell. [antibody concentration 10 ug/ml]



Western Blotting

Image 2. Western Blot detection against Immunogen (40.04 kDa).