



[Go to Product page](#)

Datasheet for ABIN563617
anti-Cmah antibody (AA 385-485)

1 Image

Overview

Quantity:	50 µL
Target:	Cmah (CMAHP)
Binding Specificity:	AA 385-485
Reactivity:	Human
Host:	Mouse
Clonality:	Polyclonal
Conjugate:	This Cmah antibody is un-conjugated
Application:	ELISA, Western Blotting (WB)

Product Details

Purpose:	Mouse polyclonal antibody raised against a partial recombinant CMAH.
Immunogen:	CMAH (BAA31160, 385 a.a. ~ 485 a.a) partial recombinant protein with GST tag.
Sequence:	GVDYLVDFLD LSFPKERPQR EHPYEEIHSR VDVIHVVKV GLLWDELYIG FQTRLQRDPD IYHHLFWNHF QIKLPLTPPN WKSFLMCCEQ NGPAILQECK T
Cross-Reactivity:	Human
Characteristics:	Antibody Reactive Against Recombinant Protein.

Target Details

Target:	Cmah (CMAHP)
Alternative Name:	CMAH (CMAHP Products)

Target Details

Background: Full Gene Name: cytidine monophosphate-N-acetylneuraminic acid hydroxylase (CMP-N-acetylneuraminate monooxygenase) pseudogene
Synonyms: CMAHP,CSAH

Gene ID: 8418

Application Details

Application Notes: Optimal working dilution should be determined by the investigator.

Restrictions: For Research Use only

Handling

Format: Liquid

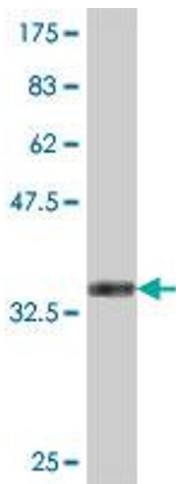
Buffer: 50 % glycerol

Handling Advice: Aliquot to avoid repeated freezing and thawing.

Storage: -20 °C

Storage Comment: Store at -20°C or lower. Aliquot to avoid repeated freezing and thawing.

Images



Western Blotting

Image 1. Western Blot detection against Immunogen (37.22 KDa).