



[Go to Product page](#)

Datasheet for ABIN563631
anti-DOC2A antibody (AA 1-400)

1 Image

Overview

Quantity:	100 µg
Target:	DOC2A
Binding Specificity:	AA 1-400
Reactivity:	Human
Host:	Mouse
Clonality:	Monoclonal
Conjugate:	This DOC2A antibody is un-conjugated
Application:	ELISA

Product Details

Purpose:	Mouse monoclonal antibody raised against a full length recombinant DOC2A.
Immunogen:	DOC2A (AAH63436, 1 a.a. ~ 400 a.a) full-length recombinant protein with GST tag. MW of the GST tag alone is 26 KDa.
Sequence:	MRGRRGDRMT INIQEHMAIN VCPGPIRPIR QISDYFPRGP GPEGGGGSGG EPAHLVPLA LAPPAALLGA TTPEDGAEVD SYDSDDATAL GTLEFDLLYD RASCTLHCSI LRAKGLKPM FNLADPYVK LHLLPGACKA NKLKTKTQRN TLNPVWNE DL TYSGITDDDI THKVLRIAVC DEDKLSHNEF IGEIRVPLRR LKPSQKKHFN ICLERQVPLA SPSSMSAALR GISCYLKELE QAEQGQGLLE ERGRILLSLS YSSRRRGLLV GILRCAHLAA MDVNGYSDPY VKTYLRPDVD KKSCHKTCVK KKTLPNEFNE EFFYEIELST LATKTLEVTW WDYDIGKSND FIGGVSLGPG ARGEARKHWS DCLQQPDAAL ERWHTLTSEL PPAAGALSSA
Clone:	3C11

Product Details

Isotype:	IgG2b
Cross-Reactivity:	Human
Characteristics:	Antibody Reactive Against Recombinant Protein.

Target Details

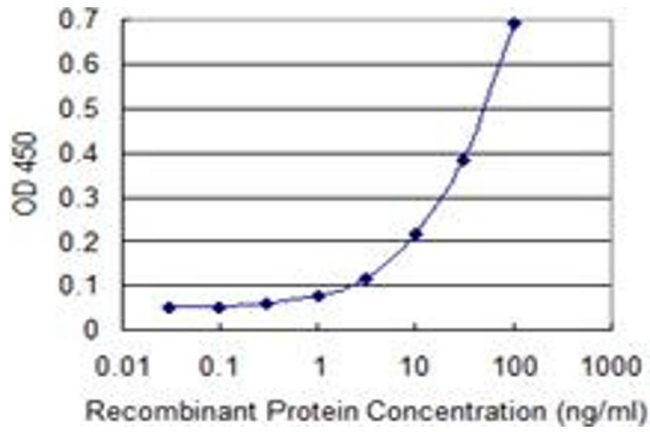
Target:	DOC2A
Alternative Name:	DOC2A (DOC2A Products)
Background:	Full Gene Name: double C2-like domains, alpha Synonyms:
Gene ID:	8448
Pathways:	Synaptic Vesicle Exocytosis

Application Details

Application Notes:	Optimal working dilution should be determined by the investigator.
Restrictions:	For Research Use only

Handling

Buffer:	In 1x PBS, pH 7.4
Handling Advice:	Aliquot to avoid repeated freezing and thawing.
Storage:	-20 °C
Storage Comment:	Store at -20°C or lower. Aliquot to avoid repeated freezing and thawing.



ELISA

Image 1. Detection limit for recombinant GST tagged DOC2A is 1 ng/ml as a capture antibody.