



Datasheet for ABIN563651  
**anti-PPFIBP2 antibody (AA 1-100)**



[Go to Product page](#)

1 Image

Overview

Quantity:	50 µL
Target:	PPFIBP2
Binding Specificity:	AA 1-100
Reactivity:	Human
Host:	Mouse
Clonality:	Polyclonal
Conjugate:	This PPFIBP2 antibody is un-conjugated
Application:	ELISA, Western Blotting (WB)

Product Details

Purpose:	Mouse polyclonal antibody raised against a partial recombinant PPFIBP2.
Immunogen:	PPFIBP2 (NP_003612, 1 a.a. ~ 100 a.a) partial recombinant protein with GST tag.
Sequence:	MASDASHALE AALEQMDGII AGTKTGADLS DGTCEPLAS PASYMNPPFV LHLIEDLRLA LEMLELPQER AALLSQIPGP TAAYIKEWFE ESLSQVNHHS
Cross-Reactivity:	Human
Characteristics:	Antibody Reactive Against Recombinant Protein.

Target Details

Target:	PPFIBP2
Alternative Name:	PPFIBP2 ( <a href="#">PPFIBP2 Products</a> )

## Target Details

Background:	Full Gene Name: PTPRF interacting protein, binding protein 2 (liprin beta 2) Synonyms: Cclp1,DKFZp781K06126,MGC42541
Gene ID:	8495
NCBI Accession:	<a href="#">NM_003621</a>

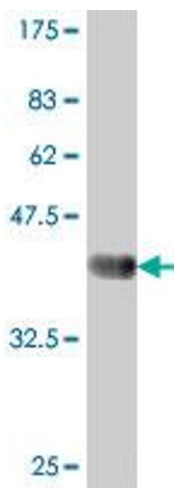
## Application Details

Application Notes:	Optimal working dilution should be determined by the investigator.
Restrictions:	For Research Use only

## Handling

Format:	Liquid
Buffer:	50 % glycerol
Handling Advice:	Aliquot to avoid repeated freezing and thawing.
Storage:	-20 °C
Storage Comment:	Store at -20°C or lower. Aliquot to avoid repeated freezing and thawing.

## Images



### Western Blotting

**Image 1.** Western Blot detection against Immunogen (37.11 kDa).