



[Go to Product page](#)

Datasheet for ABIN563810

anti-BANF1 antibody (AA 1-89)

4 Images

2 Publications

Overview

Quantity:	100 µg
Target:	BANF1
Binding Specificity:	AA 1-89
Reactivity:	Human
Host:	Mouse
Clonality:	Monoclonal
Conjugate:	This BANF1 antibody is un-conjugated
Application:	Western Blotting (WB), ELISA, Immunohistochemistry (Paraffin-embedded Sections) (IHC (p))

Product Details

Purpose:	Mouse monoclonal antibody raised against a full length recombinant BANF1.
Immunogen:	BANF1 (AAH05942, 1 a.a. ~ 89 a.a) full-length recombinant protein with GST tag. MW of the GST tag alone is 26 KDa.
Sequence:	MTTSQKHRDF VAEPMGKPV GSLAGIGEV L GKKLEERGF D KAYVVLGQFL VLKKDEDLFR EWLKDTCGAN AKQSRDCFGC LREWCAFL
Clone:	3F10-4G12
Isotype:	IgG2a
Cross-Reactivity:	Human
Characteristics:	Antibody Reactive Against Recombinant Protein.

Target Details

Target:	BANF1
Alternative Name:	BANF1 (BANF1 Products)
Background:	Full Gene Name: barrier to autointegration factor 1 Synonyms: BAF,BCRP1,D14S1460,MGC111161
Gene ID:	8815

Application Details

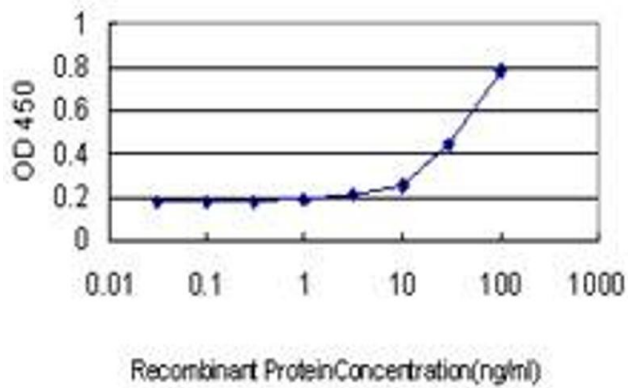
Application Notes:	Optimal working dilution should be determined by the investigator.
Restrictions:	For Research Use only

Handling

Buffer:	In 1x PBS, pH 7.4
Handling Advice:	Aliquot to avoid repeated freezing and thawing.
Storage:	-20 °C
Storage Comment:	Store at -20°C or lower. Aliquot to avoid repeated freezing and thawing.

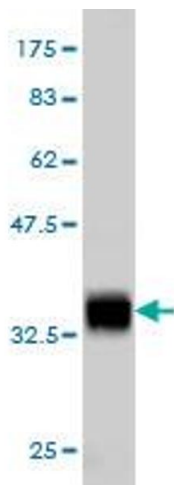
Publications

Product cited in:	<p>Tsuchiya, Ogawa, Koujin, Kobayashi, Mori, Hiraoka, Haraguchi: "Depletion of autophagy receptor p62/SQSTM1 enhances the efficiency of gene delivery in mammalian cells." in: FEBS letters, Vol. 590, Issue 16, pp. 2671-80, (2016) (PubMed).</p> <p>Zhuang, Semenova, Maric, Craigie: "Dephosphorylation of barrier-to-autointegration factor by protein phosphatase 4 and its role in cell mitosis." in: The Journal of biological chemistry, Vol. 289, Issue 2, pp. 1119-27, (2014) (PubMed).</p>
-------------------	---



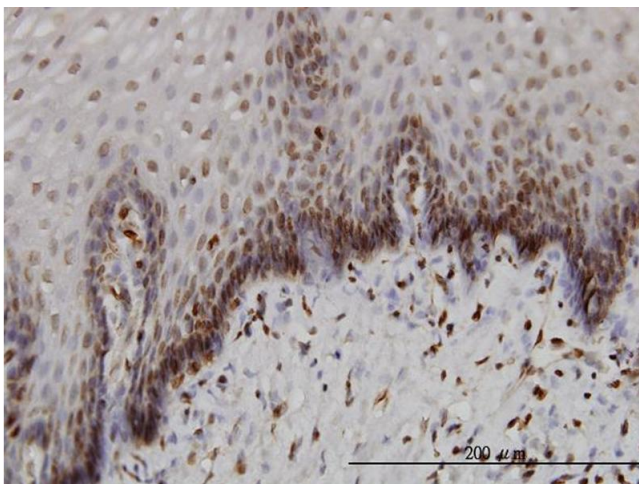
ELISA

Image 1. Detection limit for recombinant GST tagged BANF1 is approximately 1 ng/ml as a capture antibody.



Western Blotting

Image 2. Western Blot detection against Immunogen (35.53 KDa) .



Immunostaining

Image 3. Immunoperoxidase of monoclonal antibody to BANF1 on formalin-fixed paraffin-embedded human esophagus. [antibody concentration 3 ug/ml]

Please check the [product details page](#) for more images. Overall 4 images are available for ABIN563810.