



[Go to Product page](#)

Datasheet for ABIN563815
anti-SAP30 antibody (AA 131-219)

4 Images

Overview

Quantity:	100 µg
Target:	SAP30
Binding Specificity:	AA 131-219
Reactivity:	Human
Host:	Mouse
Clonality:	Monoclonal
Conjugate:	This SAP30 antibody is un-conjugated
Application:	Western Blotting (WB), ELISA, Immunofluorescence (IF), Immunohistochemistry (Paraffin-embedded Sections) (IHC (p))

Product Details

Purpose:	Mouse monoclonal antibody raised against a partial recombinant SAP30.
Immunogen:	SAP30 (NP_003855, 131 a.a. ~ 219 a.a) partial recombinant protein with GST tag. MW of the GST tag alone is 26 KDa.
Sequence:	SDDGGDSPV QDIDTPEVDL YQLQVNTLRR YKRHFKLPTP PGLNKAQLVE IVGCHFRSIP VNEKDTLTYF IYSVKNDKNK SDLKVDSGV
Clone:	4D2
Isotype:	IgG2b
Cross-Reactivity:	Human
Characteristics:	Antibody Reactive Against Recombinant Protein.

Target Details

Target:	SAP30
Alternative Name:	SAP30 (SAP30 Products)
Background:	Full Gene Name: Sin3A-associated protein, 30 kDa Synonyms:
Gene ID:	8819
NCBI Accession:	NM_003864

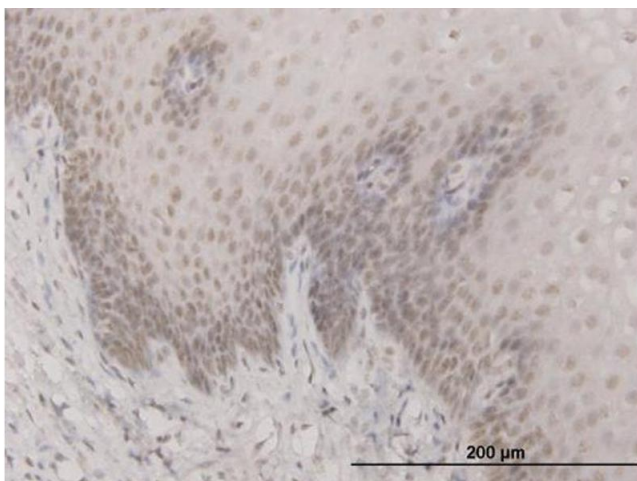
Application Details

Application Notes:	Optimal working dilution should be determined by the investigator.
Restrictions:	For Research Use only

Handling

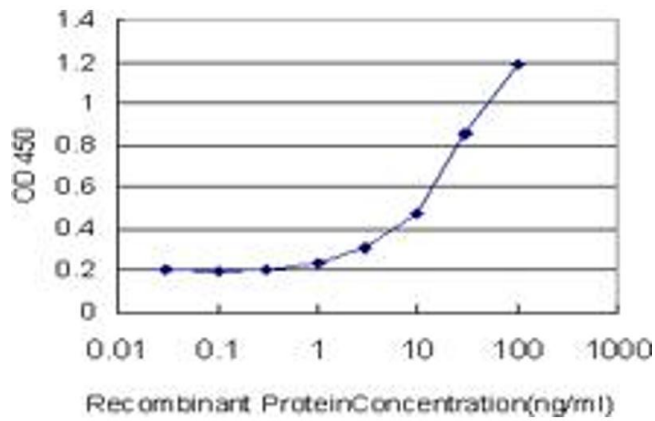
Buffer:	In 1x PBS, pH 7.4
Handling Advice:	Aliquot to avoid repeated freezing and thawing.
Storage:	-20 °C
Storage Comment:	Store at -20°C or lower. Aliquot to avoid repeated freezing and thawing.

Images



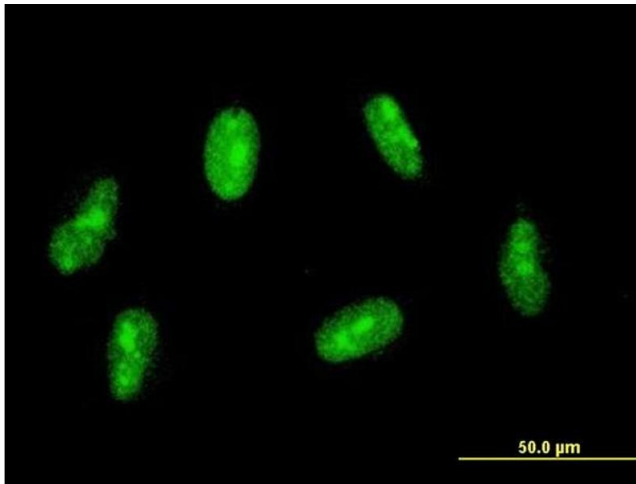
Immunostaining

Image 1. Immunoperoxidase of monoclonal antibody to SAP30 on formalin-fixed paraffin-embedded human esophagus. [antibody concentration 1.5 ug/ml]



ELISA

Image 2. Detection limit for recombinant GST tagged SAP30 is approximately 1 ng/ml as a capture antibody.



Immunofluorescence

Image 3. Immunofluorescence of monoclonal antibody to SAP30 on HeLa cell. [antibody concentration 10 ug/ml]

Please check the [product details page](#) for more images. Overall 4 images are available for ABIN563815.