



[Go to Product page](#)

Datasheet for ABIN563858

## anti-ARHGEF7 antibody (AA 102-190)

### 1 Image

#### Overview

Quantity:	50 µL
Target:	ARHGEF7
Binding Specificity:	AA 102-190
Reactivity:	Human
Host:	Mouse
Clonality:	Polyclonal
Conjugate:	This ARHGEF7 antibody is un-conjugated
Application:	Western Blotting (WB), ELISA

#### Product Details

Purpose:	Mouse polyclonal antibody raised against a partial recombinant ARHGEF7.
Immunogen:	ARHGEF7 (NP_663788, 102 a.a. ~ 190 a.a) partial recombinant protein with GST tag.
Sequence:	SSLVTLNKVT ADIGLGSDSV CARPSSHRIK SFDSLGSQSL HTRTSKLFQG QYRSLDMTDN SNNQLVVRAK FNFQQTNEDE LSFSKGDVI
Cross-Reactivity:	Human
Characteristics:	Antibody Reactive Against Recombinant Protein.

#### Target Details

Target:	ARHGEF7
Alternative	ARHGEF7 ( <a href="#">ARHGEF7 Products</a> )

## Target Details

Name:

Background: Full Gene Name: Rho guanine nucleotide exchange factor (GEF) 7

Synonyms: BETA-

PIX,COOL1,DKFZp686C12170,DKFZp761K1021,KIAA0142,KIAA0412,Nbla10314,P50,P50BP,P85,P85COOL1,P85SPR,PAK3

Gene ID: 8874

NCBI [NM\\_145735](#)

Accession:

Pathways: [EGFR Signaling Pathway](#), [Neurotrophin Signaling Pathway](#), [EGFR Downregulation](#)

## Application Details

Application Notes: Optimal working dilution should be determined by the investigator.

Restrictions: For Research Use only

## Handling

Format: Liquid

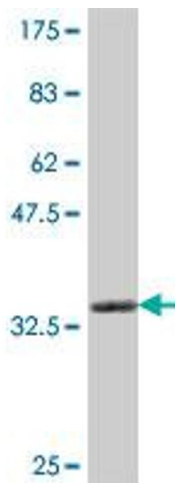
Buffer: 50 % glycerol

Handling Advice: Aliquot to avoid repeated freezing and thawing.

Storage: -20 °C

Storage Comment: Store at -20°C or lower. Aliquot to avoid repeated freezing and thawing.

## Images



### Western Blotting

**Image 1.** Western Blot detection against Immunogen (35.9 kDa).