



[Go to Product page](#)

Datasheet for ABIN563879

anti-AP1S2 antibody (AA 1-157)

1 Image

Overview

| | |
|----------------------|--------------------------------------|
| Quantity: | 100 µg |
| Target: | AP1S2 |
| Binding Specificity: | AA 1-157 |
| Reactivity: | Human |
| Host: | Mouse |
| Clonality: | Monoclonal |
| Conjugate: | This AP1S2 antibody is un-conjugated |
| Application: | ELISA |

Product Details

| | |
|-------------------|---|
| Purpose: | Mouse monoclonal antibody raised against a full length recombinant AP1S2. |
| Immunogen: | AP1S2 (AAH01117, 1 a.a. ~ 157 a.a) full-length recombinant protein with GST tag. MW of the GST tag alone is 26 KDa. |
| Sequence: | MQFMLLFSRQ GKLRLQKWYV PLSDKKKEKKI TRELVQTVLA RPKMKCSFLE WRDLKIVYKR YASLYFCCAI EDQDNELITL EIIHRYVELL DKYFGSVCEL DIIFNFEKAY FILDEFLLGG EVQETSCKNV LKAIEQADLL QEEAETPRSV LEEIGLT |
| Clone: | 3B9-G5 |
| Isotype: | IgG2b |
| Cross-Reactivity: | Human |
| Characteristics: | Antibody Reactive Against Recombinant Protein. |

Target Details

| | |
|-------------------|---|
| Target: | AP1S2 |
| Alternative Name: | AP1S2 (AP1S2 Products) |
| Background: | Full Gene Name: adaptor-related protein complex 1, sigma 2 subunit Synonyms: DC22,MGC:1902,MRX59,SIGMA1B |
| Gene ID: | 8905 |

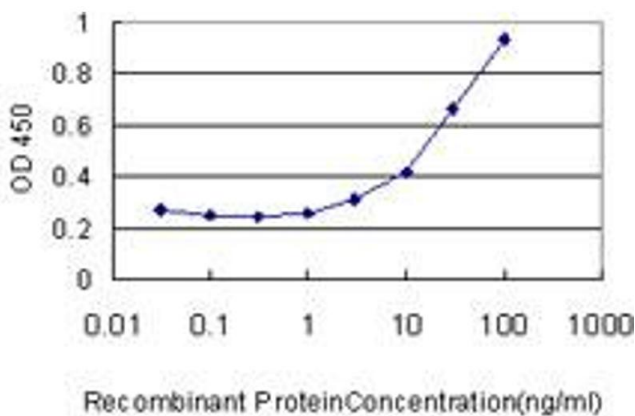
Application Details

| | |
|--------------------|--|
| Application Notes: | Optimal working dilution should be determined by the investigator. |
| Restrictions: | For Research Use only |

Handling

| | |
|------------------|--|
| Buffer: | In 1x PBS, pH 7.4 |
| Handling Advice: | Aliquot to avoid repeated freezing and thawing. |
| Storage: | -20 °C |
| Storage Comment: | Store at -20°C or lower. Aliquot to avoid repeated freezing and thawing. |

Images



ELISA

Image 1. Detection limit for recombinant GST tagged AP1S2 is approximately 3ng/ml as a capture antibody.