

Datasheet for ABIN563894

anti-Neural Wiskott-Aldrich syndrome protein (WASL) (AA 97-184) antibody



[Go to Product page](#)

4 Images

Overview

| | |
|----------------------|--|
| Quantity: | 100 µg |
| Target: | Neural Wiskott-Aldrich syndrome protein (WASL) |
| Binding Specificity: | AA 97-184 |
| Reactivity: | Human |
| Host: | Mouse |
| Clonality: | Monoclonal |
| Conjugate: | Un-conjugated |
| Application: | Western Blotting (WB), Immunofluorescence (IF), ELISA, Immunohistochemistry (Paraffin-embedded Sections) (IHC (p)) |

Product Details

| | |
|-------------------|--|
| Purpose: | Mouse monoclonal antibody raised against a partial recombinant WASL. |
| Immunogen: | WASL (NP_003932, 97 a.a. ~ 184 a.a) partial recombinant protein with GST tag. MW of the GST tag alone is 26 KDa. |
| Sequence: | NFVYNSPRGY FHTFAGDTCQ VALNFANEEE AKKFRKAVTD LLGRRQRKSE KRRDPPNGPN LPMATVDIKN PEITTNRFYG PQVNNISH |
| Clone: | 5F4 |
| Isotype: | IgG2b |
| Cross-Reactivity: | Human |
| Characteristics: | Antibody Reactive Against Recombinant Protein. |

Target Details

| | |
|-------------------|--|
| Target: | Neural Wiskott-Aldrich syndrome protein (WASL) |
| Alternative Name: | WASL (WASL Products) |
| Background: | Full Gene Name: Wiskott-Aldrich syndrome-like Synonyms: DKFZp779G0847,MGC48327,N-WASP,NWASP |
| Gene ID: | 8976 |
| NCBI Accession: | NM_003941 |

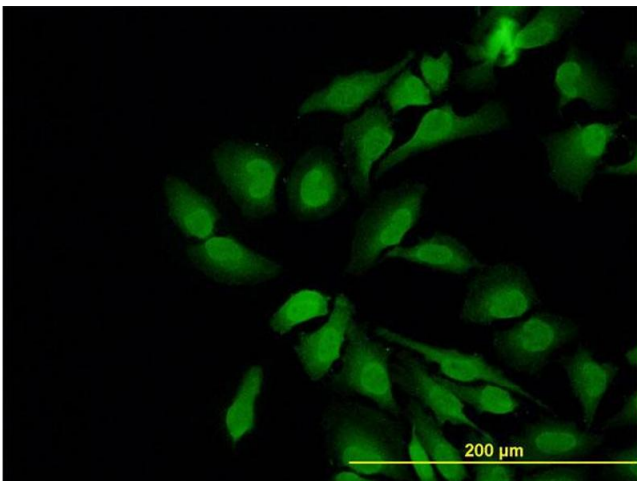
Application Details

| | |
|--------------------|--|
| Application Notes: | Optimal working dilution should be determined by the investigator. |
| Restrictions: | For Research Use only |

Handling

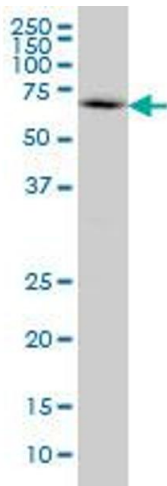
| | |
|------------------|--|
| Buffer: | In 1x PBS, pH 7.4 |
| Handling Advice: | Aliquot to avoid repeated freezing and thawing. |
| Storage: | -20 °C |
| Storage Comment: | Store at -20°C or lower. Aliquot to avoid repeated freezing and thawing. |

Images



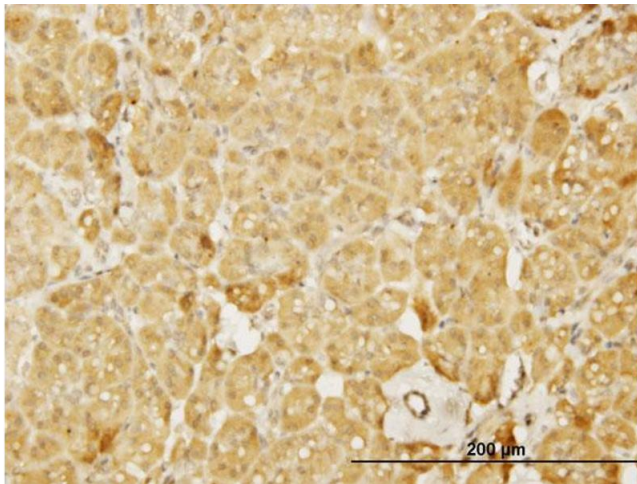
Immunofluorescence

Image 1. Immunofluorescence of monoclonal antibody to WASL on HeLa cell. [antibody concentration 10 ug/ml]



Western Blotting

Image 2. WASL monoclonal antibody (M04), clone 5F4 Western Blot analysis of WASL expression in IMR-32 .



Immunostaining

Image 3. Immunoperoxidase of monoclonal antibody to WASL on formalin-fixed paraffin-embedded human pancreas. [antibody concentration 0.8 ug/ml]

Please check the [product details page](#) for more images. Overall 4 images are available for ABIN563894.