

Datasheet for ABIN563929
anti-Claudin 2 antibody (AA 29-80)[Go to Product page](#)

1 Image

Overview

Quantity:	50 µL
Target:	Claudin 2 (CLDN2)
Binding Specificity:	AA 29-80
Reactivity:	Human
Host:	Mouse
Clonality:	Polyclonal
Conjugate:	This Claudin 2 antibody is un-conjugated
Application:	Western Blotting (WB), ELISA

Product Details

Purpose:	Mouse polyclonal antibody raised against a partial recombinant CLDN2.
Immunogen:	CLDN2 (NP_065117, 29 a.a. ~ 80 a.a) partial recombinant protein with GST tag.
Sequence:	SWKTSSYVGA SIVTAVGFSK GLWMECATHS TGITQCDIYS TLLGLPADIQ AA
Cross-Reactivity:	Human
Characteristics:	Antibody Reactive Against Recombinant Protein.

Target Details

Target:	Claudin 2 (CLDN2)
Alternative Name:	CLDN2 (CLDN2 Products)
Background:	Full Gene Name: claudin 2

Target Details

	Synonyms:
Gene ID:	9075
NCBI Accession:	NM_020384
Pathways:	Hepatitis C

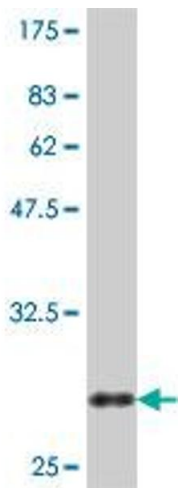
Application Details

Application Notes:	Optimal working dilution should be determined by the investigator.
Restrictions:	For Research Use only

Handling

Format:	Liquid
Buffer:	50 % glycerol
Handling Advice:	Aliquot to avoid repeated freezing and thawing.
Storage:	-20 °C
Storage Comment:	Store at -20°C or lower. Aliquot to avoid repeated freezing and thawing.

Images



Western Blotting

Image 1. Western Blot detection against Immunogen (31.83 KDa) .