



Datasheet for ABIN563953  
**anti-ARHGEF1 antibody (AA 830-927)**



[Go to Product page](#)

2 Images

Overview

Quantity:	50 µL
Target:	ARHGEF1
Binding Specificity:	AA 830-927
Reactivity:	Human
Host:	Mouse
Clonality:	Polyclonal
Conjugate:	This ARHGEF1 antibody is un-conjugated
Application:	Western Blotting (WB), ELISA

Product Details

Purpose:	Mouse polyclonal antibody raised against a partial recombinant ARHGEF1.
Immunogen:	ARHGEF1 (AAH34013, 830 a.a. ~ 927 a.a) partial recombinant protein with GST tag.
Sequence:	CRPGPEGQLA ATALRKVLSL KQLLFPAAED NGAGPPRDGD GVPGGGPLSP ARTQEIQENL LSLEETMKQL EELEEEFCRL RPLLSQLGGN SVPQPGCT
Cross-Reactivity:	Human
Characteristics:	Antibody Reactive Against Recombinant Protein.

Target Details

Target:	ARHGEF1
Alternative Name:	ARHGEF1 ( <a href="#">ARHGEF1 Products</a> )

## Target Details

Background:	Full Gene Name: Rho guanine nucleotide exchange factor (GEF) 1 Synonyms: GEF1, LBCL2, LSC, P115-RHOGEF, SUB1.5
Gene ID:	9138
Pathways:	<a href="#">Neurotrophin Signaling Pathway</a> , <a href="#">Regulation of G-Protein Coupled Receptor Protein Signaling</a> , <a href="#">Thromboxane A2 Receptor Signaling</a>

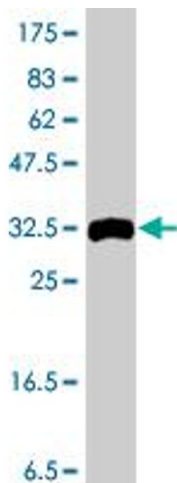
## Application Details

Application Notes:	Optimal working dilution should be determined by the investigator.
Restrictions:	For Research Use only

## Handling

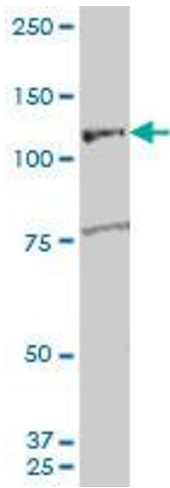
Format:	Liquid
Buffer:	50 % glycerol
Handling Advice:	Aliquot to avoid repeated freezing and thawing.
Storage:	-20 °C
Storage Comment:	Store at -20°C or lower. Aliquot to avoid repeated freezing and thawing.

## Images



### Western Blotting

**Image 1.** Western Blot detection against Immunogen (36.78 KDa) .



### Western Blotting

**Image 2.** ARHGEF1 polyclonal antibody (A01), Lot # 060726QCS1 Western Blot analysis of ARHGEF1 expression in K-562 .