

Datasheet for ABIN563969  
**anti-SLC33A1 antibody (AA 1-69)**

5 Images

2 Publications

[Go to Product page](#)

## Overview

Quantity:	100 µg
Target:	SLC33A1
Binding Specificity:	AA 1-69
Reactivity:	Human
Host:	Mouse
Clonality:	Monoclonal
Conjugate:	This SLC33A1 antibody is un-conjugated
Application:	ELISA, Western Blotting (WB), RNA Interference (RNAi)

## Product Details

Purpose:	Mouse monoclonal antibody raised against a partial recombinant SLC33A1.
Immunogen:	SLC33A1 (NP_004724, 1 a.a. ~ 69 a.a) partial recombinant protein with GST tag. MW of the GST tag alone is 26 KDa.
Sequence:	MSPTISHKDS SRQRRPGNFS HSLDMKSGPL PPGWDDSHL DSAGREGDRE ALLGDTGTGD FLKAPQSFR
Clone:	3A4
Isotype:	IgG2a
Cross-Reactivity:	Human, Rat
Characteristics:	Antibody Reactive Against Recombinant Protein.

## Target Details

Target:	SLC33A1
Alternative Name:	SLC33A1 ( <a href="#">SLC33A1 Products</a> )
Background:	Full Gene Name: solute carrier family 33 (acetyl-CoA transporter), member 1 Synonyms: ACATN,AT-1,AT1,SPG42
Gene ID:	9197
NCBI Accession:	<a href="#">NM_004733</a>

## Application Details

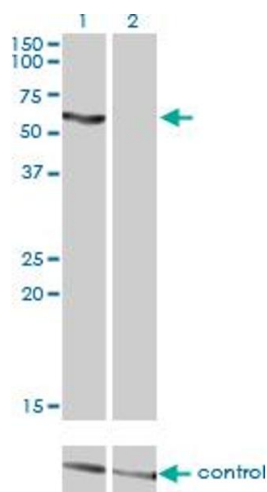
Application Notes:	Optimal working dilution should be determined by the investigator.
Restrictions:	For Research Use only

## Handling

Buffer:	In 1x PBS, pH 7.4
Handling Advice:	Aliquot to avoid repeated freezing and thawing.
Storage:	-20 °C
Storage Comment:	Store at -20°C or lower. Aliquot to avoid repeated freezing and thawing.

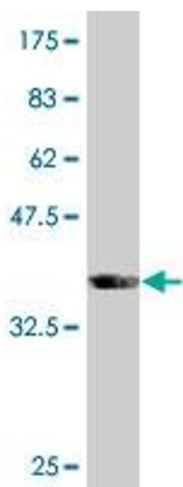
## Publications

Product cited in:	<p>Pehar, Jonas, Hare, Puglielli: "SLC33A1/AT-1 protein regulates the induction of autophagy downstream of IRE1/XBP1 pathway." in: <b>The Journal of biological chemistry</b>, Vol. 287, Issue 35, pp. 29921-30, (2012) (<a href="#">PubMed</a>).</p> <p>Jonas, Pehar, Puglielli: "AT-1 is the ER membrane acetyl-CoA transporter and is essential for cell viability." in: <b>Journal of cell science</b>, Vol. 123, Issue Pt 19, pp. 3378-88, (2010) (<a href="#">PubMed</a>).</p>
-------------------	--



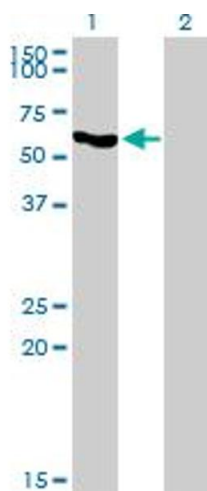
#### Western Blotting

**Image 1.** Western blot analysis of SLC33A1 over-expressed 293 cell line, cotransfected with SLC33A1 Validated Chimera RNAi (Lane 2) or non-transfected control (Lane 1). Blot probed with SLC33A1 monoclonal antibody (M07), clone 3A4. GAPDH ( 36.1 kDa ) used as specificity and loading control.



#### Western Blotting

**Image 2.** Western Blot detection against Immunogen (33.33 KDa) .



#### Western Blotting

**Image 3.** Western Blot analysis of SLC33A1 expression in transfected 293T cell line by SLC33A1 monoclonal antibody (M07), clone 3A4.

Lane 1: SLC33A1 transfected lysate(60.9 KDa).

Lane 2: Non-transfected lysate.

Please check the [product details page](#) for more images. Overall 5 images are available for ABIN563969.