



[Go to Product page](#)

Datasheet for ABIN563994

anti-UBE2L6 antibody (AA 1-153)

3 Images

1 Publication

Overview

Quantity:	100 µg
Target:	UBE2L6
Binding Specificity:	AA 1-153
Reactivity:	Human
Host:	Mouse
Clonality:	Monoclonal
Conjugate:	This UBE2L6 antibody is un-conjugated
Application:	Western Blotting (WB), ELISA

Product Details

Purpose:	Mouse monoclonal antibody raised against a full length recombinant UBE2L6.
Immunogen:	UBE2L6 (AAH32491, 1 a.a. ~ 153 a.a) full-length recombinant protein with GST tag. MW of the GST tag alone is 26 KDa.
Sequence:	MMASMRVVKE LEDLQKKPPP YLRNLSSDDA NVLVWHALLL PDQPPYHLKA FNLRSFPPE YPFKPPMIKF TTKIYHPNVD ENGQICLPPII SSENWKPCTK TCQVLEALNV LVNRPNIREP LRMDLADLLT QNPELFRKNA EEFTLRFGVD RPS
Clone:	2F12-1F4
Isotype:	IgG1
Cross-Reactivity:	Human
Characteristics:	Antibody Reactive Against Recombinant Protein.

Target Details

Target:	UBE2L6
Alternative Name:	UBE2L6 (UBE2L6 Products)
Background:	Full Gene Name: ubiquitin-conjugating enzyme E2L 6 Synonyms: MGC40331,RIG-B,UBCH8
Gene ID:	9246

Application Details

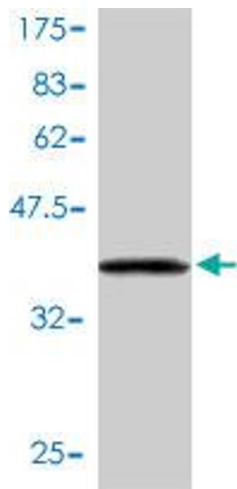
Application Notes:	Optimal working dilution should be determined by the investigator.
Restrictions:	For Research Use only

Handling

Buffer:	In 1x PBS, pH 7.4
Handling Advice:	Aliquot to avoid repeated freezing and thawing.
Storage:	-20 °C
Storage Comment:	Store at -20°C or lower. Aliquot to avoid repeated freezing and thawing.

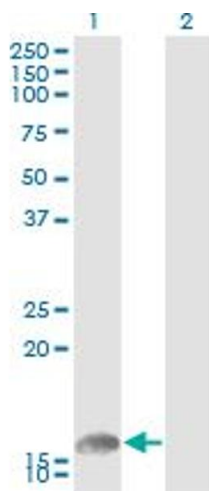
Publications

Product cited in:	Zhang, Adyshev, Singleton, Li, Cepeda, Huang, Zou, Verin, Tu, Garcia, Ye: "Interactions between PBEF and oxidative stress proteins--a potential new mechanism underlying PBEF in the pathogenesis of acute lung injury." in: FEBS letters , Vol. 582, Issue 13, pp. 1802-8, (2008) (PubMed).
-------------------	-----------------------------------------------------------------------------------------------------------------------------------------------------------------------------------------------------------------------------------------------------------------------------------------------------------------------



Western Blotting

Image 1. Western Blot detection against Immunogen (42.57 KDa) .

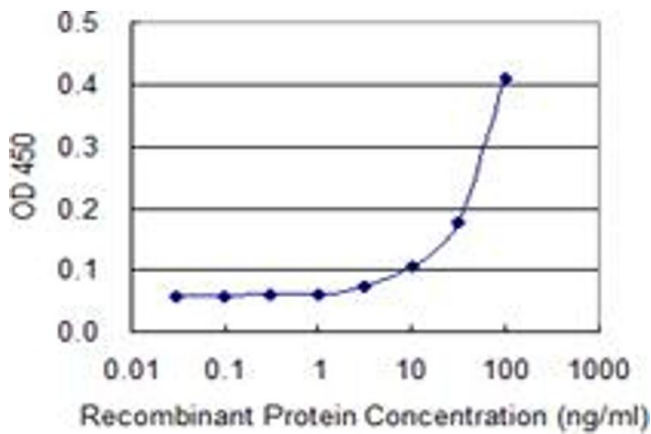


Western Blotting

Image 2. Western Blot analysis of UBE2L6 expression in transfected 293T cell line by UBE2L6 monoclonal antibody (M01), clone 2F12-1F4.

Lane 1: UBE2L6 transfected lysate(17.595 KDa).

Lane 2: Non-transfected lysate.



ELISA

Image 3. Detection limit for recombinant GST tagged UBE2L6 is 3 ng/ml as a capture antibody.