



[Go to Product page](#)

Datasheet for ABIN564007

anti-BCL7B antibody (AA 124-202)

5 Images

Overview

Quantity:	100 µg
Target:	BCL7B
Binding Specificity:	AA 124-202
Reactivity:	Human
Host:	Mouse
Clonality:	Monoclonal
Conjugate:	This BCL7B antibody is un-conjugated
Application:	Western Blotting (WB), ELISA, Immunofluorescence (IF)

Product Details

Purpose:	Mouse monoclonal antibody raised against a partial recombinant BCL7B.
Immunogen:	BCL7B (NP_001698, 124 a.a. ~ 202 a.a) partial recombinant protein with GST tag. MW of the GST tag alone is 26 KDa.
Sequence:	AHTSDFRTDD SQPPTLGQEI LEEPSLPSE VADEPPTLTK EEPVPLETQV VEEEEEDSGAP PLKRFCVDQP TVPQTASES
Clone:	6D2
Isotype:	IgG1
Cross-Reactivity:	Human
Characteristics:	Antibody Reactive Against Recombinant Protein.

Target Details

Target:	BCL7B
Alternative Name:	BCL7B (BCL7B Products)
Background:	Full Gene Name: B-cell CLL/lymphoma 7B Synonyms:
Gene ID:	9275
NCBI Accession:	NM_001707

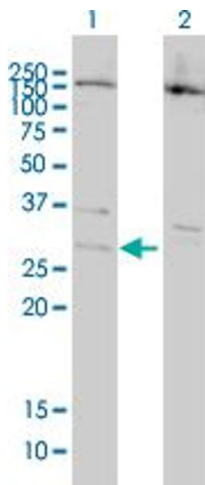
Application Details

Application Notes:	Optimal working dilution should be determined by the investigator.
Restrictions:	For Research Use only

Handling

Buffer:	In 1x PBS, pH 7.4
Handling Advice:	Aliquot to avoid repeated freezing and thawing.
Storage:	-20 °C
Storage Comment:	Store at -20°C or lower. Aliquot to avoid repeated freezing and thawing.

Images

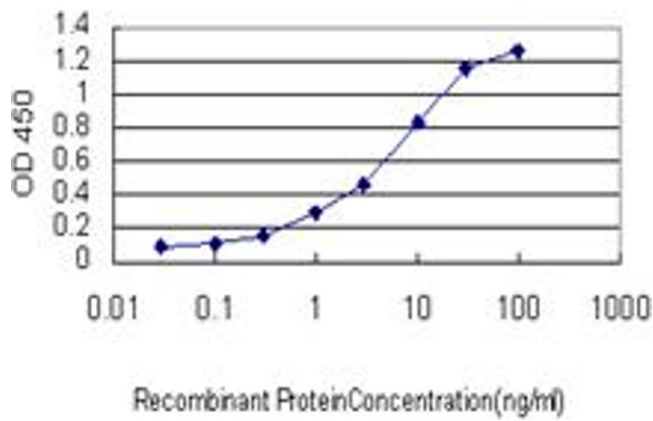


Western Blotting

Image 1. Western Blot analysis of BCL7B expression in transfected 293T cell line by BCL7B monoclonal antibody (M01), clone 6D2.

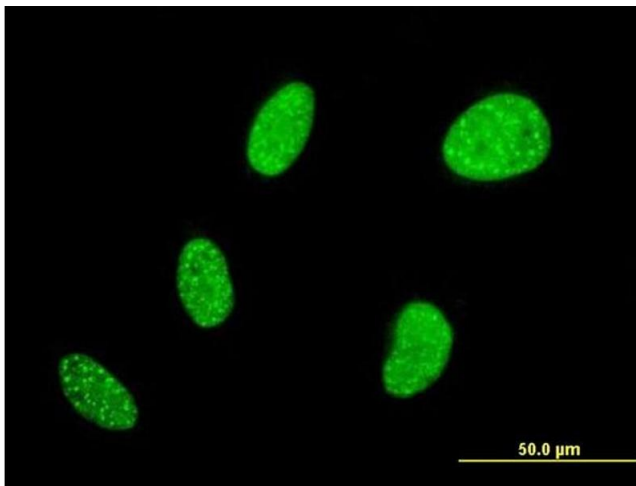
Lane 1: BCL7B transfected lysate(22 kDa).

Lane 2: Non-transfected lysate.



ELISA

Image 2. Detection limit for recombinant GST tagged BCL7B is approximately 0.1ng/ml as a capture antibody.



Immunofluorescence

Image 3. Immunofluorescence of monoclonal antibody to BCL7B on HeLa cell. [antibody concentration 10 ug/ml]

Please check the [product details page](#) for more images. Overall 5 images are available for ABIN564007.