



Datasheet for ABIN564038
anti-CPNE6 antibody (AA 1-557)



[Go to Product page](#)

2 Images

Overview

Quantity:	100 µg
Target:	CPNE6
Binding Specificity:	AA 1-557
Reactivity:	Human
Host:	Mouse
Clonality:	Monoclonal
Conjugate:	This CPNE6 antibody is un-conjugated
Application:	Western Blotting (WB), ELISA

Product Details

Purpose:	Mouse monoclonal antibody raised against a full length recombinant CPNE6.
Immunogen:	CPNE6 (AAH18046, 1 a.a. ~ 557 a.a) full-length recombinant protein with GST tag. MW of the GST tag alone is 26 KDa.
Sequence:	MSDPEMGWVP EPQMTLGLAS RVELRVSCHG LLDRDTLTKP HPCVLLKLYS DEQWVEVERT EVLRSCSSPV FSRVLALEYF FEEKQPVQFH VFDAEDGATS PRNDTFLGST ECTLGQIVSQ TKVTKPLLLK NGKTAGKSTI TIVAAEEVSGT NDYVQLTFRA YKLDNKDLFS KSDPFMEIYK TNEDQSDQLV WRTEVVKNNL NPSWEPFRLS LHSLCSCDVH RPLKFLVYDY DSSGKHDFIG EFTSTFQEMQ EGTANPGQEM QWDCINPKYR DKKKNYKSSG TVVLAQCTVE KVHTFLDYIM GGCQISFTVA IDFTASNGDP RSSQSLHCLS PRQPNHYLQA LRAVGGICQD YSDSKRFPAP GFGARIPPNF EVSHDFAINF DPENPECEEI SGVIASRYRC LPQIQLYGPT NVAPIINRVA EPAQREQSTG QATKYSVLLV LTDGVVSDMA ETRTAIVRAS RLPMSIIIVG VGNADFSDMR LLDGDDGPLR CPRGVPAARD IVQFVPRDF KDAAPSALAK CVLAEVPRQV VEYYASQGIS

Product Details

PGAPRPCTLA TTPSPSP

Clone: 6D11

Isotype: IgG3

Cross-Reactivity: Human

Characteristics: Antibody Reactive Against Recombinant Protein.

Target Details

Target: CPNE6

Alternative Name: CPNE6 ([CPNE6 Products](#))

Background: Full Gene Name: copine VI (neuronal)
Synonyms: N-COPINE

Gene ID: 9362

Application Details

Application Notes: Optimal working dilution should be determined by the investigator.

Restrictions: For Research Use only

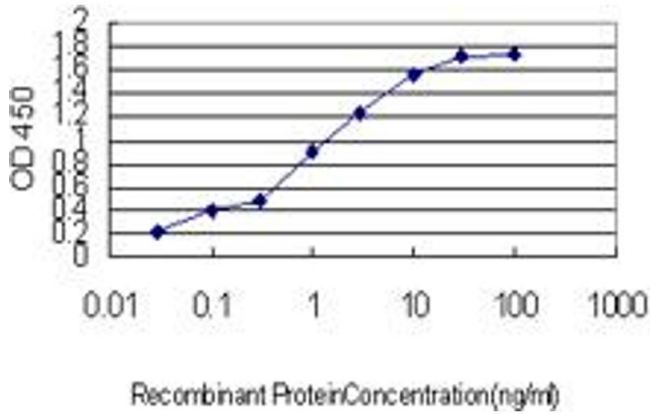
Handling

Buffer: In 1x PBS, pH 7.4

Handling Advice: Aliquot to avoid repeated freezing and thawing.

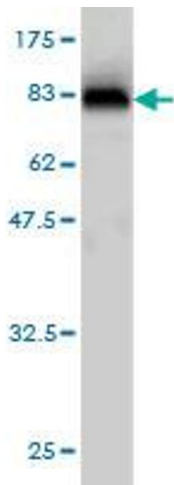
Storage: -20 °C

Storage Comment: Store at -20°C or lower. Aliquot to avoid repeated freezing and thawing.



ELISA

Image 1. Detection limit for recombinant GST tagged CPNE6 is approximately 0.03ng/ml as a capture antibody.



Western Blotting

Image 2. Western Blot detection against Immunogen (87.01 kDa) .