

Datasheet for ABIN564126
anti-GTF2IRD1 antibody (AA 431-530)



[Go to Product page](#)

3 Images

Overview

Quantity:	100 µg
Target:	GTF2IRD1
Binding Specificity:	AA 431-530
Reactivity:	Human
Host:	Mouse
Clonality:	Monoclonal
Conjugate:	This GTF2IRD1 antibody is un-conjugated
Application:	Western Blotting (WB), ELISA

Product Details

Purpose:	Mouse monoclonal antibody raised against a partial recombinant GTF2IRD1.
Immunogen:	GTF2IRD1 (NP_005676, 431 a.a. ~ 530 a.a) partial recombinant protein with GST tag. MW of the GST tag alone is 26 KDa.
Sequence:	IFTGNKFTKD TTKLEPASPP EDTSAEVSRA TVLDLAGNAR SDKGSMSEDC GPGTSGELGG LRPIKIEPED LDIIQVTVPD PSPTSEEMTD SMPGHLPSD
Clone:	1D2
Isotype:	IgG2b
Cross-Reactivity:	Human
Characteristics:	Antibody Reactive Against Recombinant Protein.

Target Details

Target:	GTF2IRD1
Alternative Name:	GTF2IRD1 (GTF2IRD1 Products)
Background:	Full Gene Name: GTF2I repeat domain containing 1 Synonyms: BEN,CREAM1,GTF3,MUSTRD1,RBAP2,WBS,WBSCR11,WBSCR12,hMusTRD1alpha1
Gene ID:	9569
NCBI Accession:	NM_005685

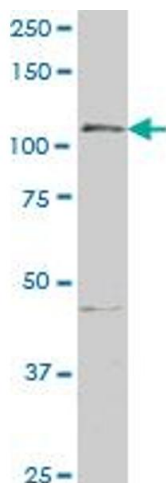
Application Details

Application Notes:	Optimal working dilution should be determined by the investigator.
Restrictions:	For Research Use only

Handling

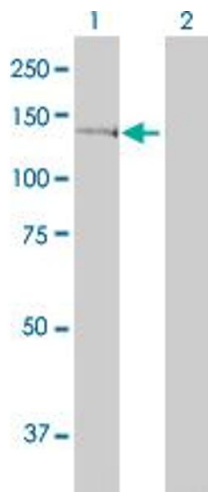
Buffer:	In 1x PBS, pH 7.4
Handling Advice:	Aliquot to avoid repeated freezing and thawing.
Storage:	-20 °C
Storage Comment:	Store at -20°C or lower. Aliquot to avoid repeated freezing and thawing.

Images



Western Blotting

Image 1. GTF2IRD1 monoclonal antibody (M01), clone 1D2
Western Blot analysis of GTF2IRD1 expression in Jurkat .

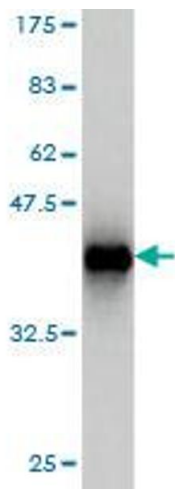


Western Blotting

Image 2. Western Blot analysis of GTF2IRD1 expression in transfected 293T cell line by GTF2IRD1 monoclonal antibody (M01), clone 1D2.

Lane 1: GTF2IRD1 transfected lysate(106 kDa).

Lane 2: Non-transfected lysate.



Western Blotting

Image 3. Western Blot detection against Immunogen (36.74 kDa).