



[Go to Product page](#)

Datasheet for ABIN564128
anti-GDF3 antibody (AA 265-364)

1 Image

Overview

Quantity:	100 µg
Target:	GDF3
Binding Specificity:	AA 265-364
Reactivity:	Human
Host:	Mouse
Clonality:	Monoclonal
Conjugate:	This GDF3 antibody is un-conjugated
Application:	ELISA

Product Details

Purpose:	Mouse monoclonal antibody raised against a partial recombinant GDF3.
Immunogen:	GDF3 (NP_065685, 265 a.a. ~ 364 a.a) partial recombinant protein with GST tag. MW of the GST tag alone is 26 KDa.
Sequence:	HRHQLFINFR DLGWHKWIIA PKGFMANYCH GECPFSLTIS LNSSNYAFMQ ALMHAVDPEI PQAVCIPTKL SPISMLYQDN NDNVILRHYE DMVVDECGCG
Clone:	2B10
Isotype:	IgG2b
Cross-Reactivity:	Human
Characteristics:	Antibody Reactive Against Recombinant Protein.

Target Details

Target:	GDF3
Alternative Name:	GDF3 (GDF3 Products)
Background:	Full Gene Name: growth differentiation factor 3 Synonyms:
Gene ID:	9573
NCBI Accession:	NM_020634

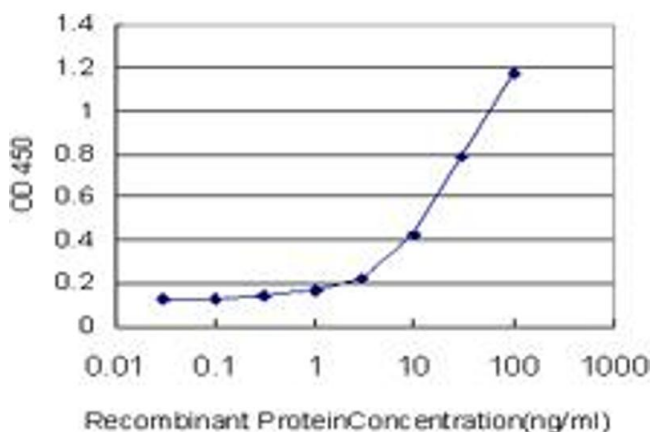
Application Details

Application Notes:	Optimal working dilution should be determined by the investigator.
Restrictions:	For Research Use only

Handling

Buffer:	In 1x PBS, pH 7.4
Handling Advice:	Aliquot to avoid repeated freezing and thawing.
Storage:	-20 °C
Storage Comment:	Store at -20°C or lower. Aliquot to avoid repeated freezing and thawing.

Images



ELISA

Image 1. Detection limit for recombinant GST tagged GDF3 is approximately 0.3ng/ml as a capture antibody.