



[Go to Product page](#)

Datasheet for ABIN564139

## anti-CREB5 antibody (AA 1-99)

### 5 Images

#### Overview

Quantity:	50 µg
Target:	CREB5
Binding Specificity:	AA 1-99
Reactivity:	Human
Host:	Mouse
Clonality:	Monoclonal
Conjugate:	This CREB5 antibody is un-conjugated
Application:	Western Blotting (WB), ELISA, Immunoprecipitation (IP)

#### Product Details

Purpose:	Mouse monoclonal antibody raised against a partial recombinant CREB5.
Immunogen:	CREB5 (NP_001011666, 1 a.a. ~ 99 a.a) partial recombinant protein with GST tag. MW of the GST tag alone is 26 KDa.
Sequence:	MFCTSGGNSA SVMSMRPVPG SLSSLLHLHN RQRQPMPASM PGTLPNPTMP GSSAVLMPME RQMSVNSSIM GMQGPNSNP CASPQVQPMH SEAKMRLKA
Clone:	1E2
Isotype:	IgG2a
Cross-Reactivity:	Human
Characteristics:	Antibody Reactive Against Recombinant Protein.

## Target Details

Target:	CREB5
Alternative Name:	CREB5 ( <a href="#">CREB5 Products</a> )
Background:	Full Gene Name: cAMP responsive element binding protein 5 Synonyms: CRE-BPA
Gene ID:	9586
NCBI Accession:	<a href="#">NM_001011666</a>
Pathways:	<a href="#">Thyroid Hormone Synthesis</a>

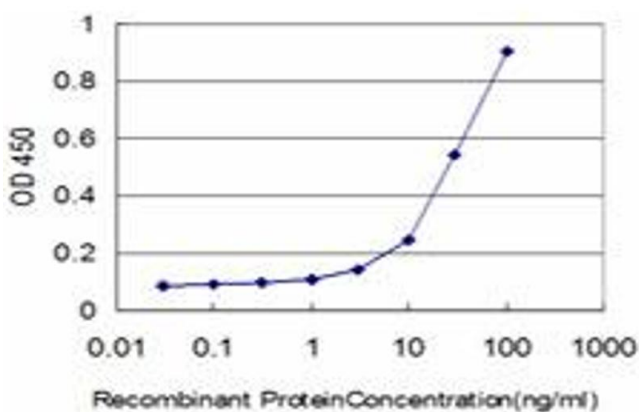
## Application Details

Application Notes:	Optimal working dilution should be determined by the investigator.
Restrictions:	For Research Use only

## Handling

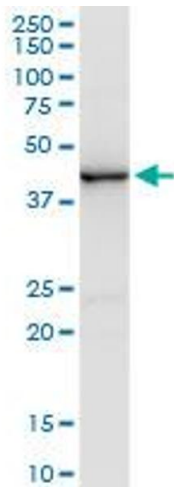
Buffer:	In 1x PBS, pH 7.4
Handling Advice:	Aliquot to avoid repeated freezing and thawing.
Storage:	-20 °C
Storage Comment:	Store at -20°C or lower. Aliquot to avoid repeated freezing and thawing.

## Images



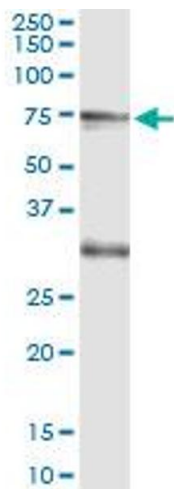
### ELISA

**Image 1.** Detection limit for recombinant GST tagged CREB5 is approximately 3ng/ml as a capture antibody.



#### Western Blotting

**Image 2.** CREB5 monoclonal antibody (M01), clone 1E2. Western Blot analysis of CREB5 expression in human kidney.



#### Western Blotting

**Image 3.** Immunoprecipitation of CREB5 transfected lysate using anti-CREB5 monoclonal antibody and Protein A Magnetic Bead, and immunoblotted with CREB5 MaxPab rabbit polyclonal antibody.

Please check the [product details page](#) for more images. Overall 5 images are available for ABIN564139.