



[Go to Product page](#)

Datasheet for ABIN564150  
**anti-RIN1 antibody (AA 646-755)**

1 Image

Overview

|                      |                                     |
|----------------------|-------------------------------------|
| Quantity:            | 50 µL                               |
| Target:              | RIN1                                |
| Binding Specificity: | AA 646-755                          |
| Reactivity:          | Human                               |
| Host:                | Mouse                               |
| Clonality:           | Polyclonal                          |
| Conjugate:           | This RIN1 antibody is un-conjugated |
| Application:         | Western Blotting (WB), ELISA        |

Product Details

|                   |   |
|-------------------|---|
| Purpose:          | Mouse polyclonal antibody raised against a partial recombinant RIN1.  |
| Immunogen:        | RIN1 (AAH14417, 646 a.a. ~ 755 a.a) partial recombinant protein with GST tag.   |
| Sequence:         | VPPEASIATL NQLCATKFRV TQPNTFGLFL YKEQGYHRLP PGALAHRLPT TGYLVYRRAE<br>WPETQGAVTE EEGSGQSEAR SRGEEQGCQG DGDAGVKASP RDIREQSETT |
| Cross-Reactivity: | Human   |
| Characteristics:  | Antibody Reactive Against Recombinant Protein.  |

Target Details

|                   |  |
|-------------------|--|
| Target:           | RIN1                                   |
| Alternative Name: | RIN1 ( <a href="#">RIN1 Products</a> ) |

## Target Details

Background: Full Gene Name: Ras and Rab interactor 1  
Synonyms:

Gene ID: 9610

## Application Details

Application Notes: Optimal working dilution should be determined by the investigator.

Restrictions: For Research Use only

## Handling

Format: Liquid

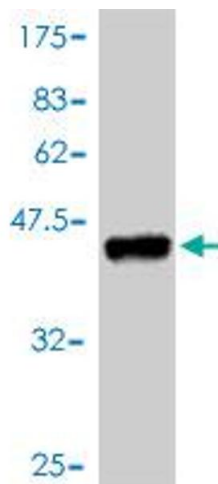
Buffer: 50 % glycerol

Handling Advice: Aliquot to avoid repeated freezing and thawing.

Storage: -20 °C

Storage Comment: Store at -20°C or lower. Aliquot to avoid repeated freezing and thawing.

## Images



### Western Blotting

**Image 1.** Western Blot detection against Immunogen (38.1 kDa).