



[Go to Product page](#)

Datasheet for ABIN564156
anti-TCL1B antibody (AA 1-128)

1 Image

Overview

Quantity:	100 µg
Target:	TCL1B
Binding Specificity:	AA 1-128
Reactivity:	Human
Host:	Mouse
Clonality:	Monoclonal
Conjugate:	This TCL1B antibody is un-conjugated
Application:	Western Blotting (WB), ELISA

Product Details

Purpose:	Mouse monoclonal antibody raised against a full length recombinant TCL1B.
Immunogen:	TCL1B (AAH51000, 1 a.a. ~ 128 a.a) full-length recombinant protein with GST tag. MW of the GST tag alone is 26 KDa.
Sequence:	MASEASVRLG VPPGRLWIQR PGIYEDEEGR TWVTVVVRFN PSRREWARRAS QGSRYEPSIT VHLWQMAVHT RELSSGQMP FSQLPAVWQL YPRRKYRAAD SSFWEIADHG QIDSMEQLVL TYQPERKD
Clone:	2A12
Isotype:	IgG1
Cross-Reactivity:	Human
Characteristics:	Antibody Reactive Against Recombinant Protein.

Target Details

Target:	TCL1B
Alternative Name:	TCL1B (TCL1B Products)
Background:	Full Gene Name: T-cell leukemia/lymphoma 1B Synonyms: TML1
Gene ID:	9623

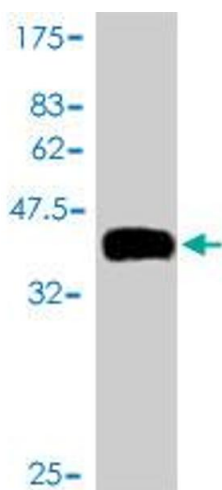
Application Details

Application Notes:	Optimal working dilution should be determined by the investigator.
Restrictions:	For Research Use only

Handling

Buffer:	In 1x PBS, pH 7.4
Handling Advice:	Aliquot to avoid repeated freezing and thawing.
Storage:	-20 °C
Storage Comment:	Store at -20°C or lower. Aliquot to avoid repeated freezing and thawing.

Images



Western Blotting

Image 1. Western Blot detection against Immunogen (39.82 kDa).