



[Go to Product page](#)

Datasheet for ABIN564167  
**anti-CLCA2 antibody (AA 300-400)**

1 Image

### Overview

Quantity:	50 µL
Target:	CLCA2
Binding Specificity:	AA 300-400
Reactivity:	Human
Host:	Mouse
Clonality:	Polyclonal
Conjugate:	This CLCA2 antibody is un-conjugated
Application:	Western Blotting (WB), ELISA

### Product Details

Purpose:	Mouse polyclonal antibody raised against a partial recombinant CLCA2.
Immunogen:	CLCA2 (NP_006527, 300 a.a. ~ 400 a.a) partial recombinant protein with GST tag.
Sequence:	PTFSLVQAGD KVVCLVLDVS SKMAEADRLL QLQQAAEFYI MQIVEIHTFV GIASFDSKGE IRAQLHQINS NDDRKLLVSY LPTTVSAKTD ISICSGLKKG F
Cross-Reactivity:	Human
Characteristics:	Antibody Reactive Against Recombinant Protein.

### Target Details

Target:	CLCA2
Alternative Name:	CLCA2 ( <a href="#">CLCA2 Products</a> )

## Target Details

Background:	Full Gene Name: chloride channel regulator 2 Synonyms: CACC,CACC3,CLCRG2,CaCC-3,FLJ97885
Gene ID:	9635
NCBI Accession:	<a href="#">NM_006536</a>

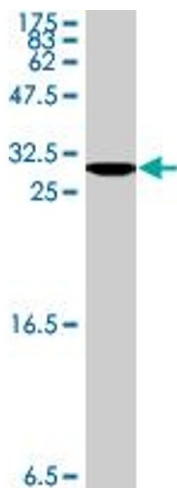
## Application Details

Application Notes:	Optimal working dilution should be determined by the investigator.
Restrictions:	For Research Use only

## Handling

Format:	Liquid
Buffer:	50 % glycerol
Handling Advice:	Aliquot to avoid repeated freezing and thawing.
Storage:	-20 °C
Storage Comment:	Store at -20°C or lower. Aliquot to avoid repeated freezing and thawing.

## Images



### Western Blotting

**Image 1.** Western Blot detection against Immunogen (37.22 KDa) .