



[Go to Product page](#)

Datasheet for ABIN564168

anti-IKKi/IKKe antibody (AA 541-640)

1 Image

Overview

Quantity:	100 µg
Target:	IKKi/IKKe (IKBKE)
Binding Specificity:	AA 541-640
Reactivity:	Human
Host:	Mouse
Clonality:	Monoclonal
Conjugate:	This IKKi/IKKe antibody is un-conjugated
Application:	ELISA

Product Details

Purpose:	Mouse monoclonal antibody raised against a partial recombinant IKBKE.
Immunogen:	IKBKE (NP_054721, 541 a.a. ~ 640 a.a) partial recombinant protein with GST tag. MW of the GST tag alone is 26 KDa.
Sequence:	QQIQCYLDKM NFIYKQFKKS RMRPGLGYNE EQIHKLDKVN FSHLAKRLLQ VFQEECVQKY QASLVTHGKR MRVWHETRNH LRLVGC SVAA CNTEA QGVQE
Clone:	2F1
Isotype:	IgG1
Cross-Reactivity:	Human
Characteristics:	Antibody Reactive Against Recombinant Protein.

Target Details

Target:	IKKi/IKKe (IKBKE)
Alternative Name:	IKBKE (IKBKE Products)
Background:	Full Gene Name: inhibitor of kappa light polypeptide gene enhancer in B-cells, kinase epsilon Synonyms: IKK-i,IKKE,IKKI,KIAA0151,MGC125294,MGC125295,MGC125297
Gene ID:	9641
NCBI Accession:	NM_014002
Pathways:	TLR Signaling , Activation of Innate immune Response , Hepatitis C , Toll-Like Receptors Cascades

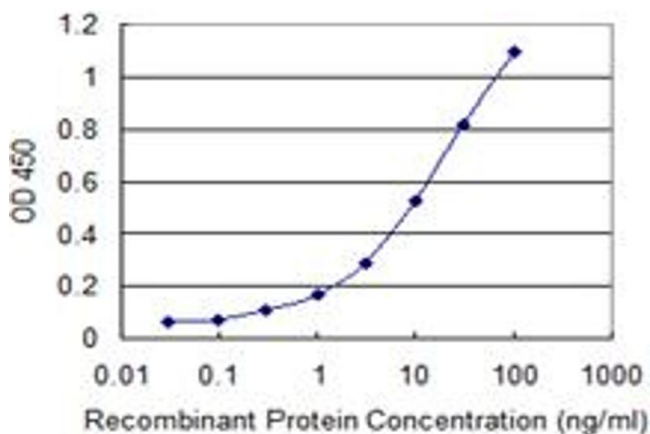
Application Details

Application Notes:	Optimal working dilution should be determined by the investigator.
Restrictions:	For Research Use only

Handling

Buffer:	In 1x PBS, pH 7.4
Handling Advice:	Aliquot to avoid repeated freezing and thawing.
Storage:	-20 °C
Storage Comment:	Store at -20°C or lower. Aliquot to avoid repeated freezing and thawing.

Images



ELISA

Image 1. Detection limit for recombinant GST tagged IKBKE is 0.1 ng/ml as a capture antibody.