



[Go to Product page](#)

Datasheet for ABIN564181

## anti-RAPGEF2 antibody (AA 1398-1487)

2 Images

3 Publications

### Overview

Quantity:	100 µg
Target:	RAPGEF2
Binding Specificity:	AA 1398-1487
Reactivity:	Human
Host:	Mouse
Clonality:	Monoclonal
Conjugate:	This RAPGEF2 antibody is un-conjugated
Application:	Western Blotting (WB), ELISA

### Product Details

Purpose:	Mouse monoclonal antibody raised against a partial recombinant RAPGEF2.
Immunogen:	RAPGEF2 (XP_376350, 1398 a.a. ~ 1487 a.a) partial recombinant protein with GST tag. MW of the GST tag alone is 26 KDa.
Sequence:	PITDFPEGHS HPARKPPDYN VALQRSRMVA RSSDTAGPSS VQPPHGHPTS SRPVNKPQWH KPNESDPRLA PYQSQGFSTE EDEDEQVSAV
Clone:	1E8
Isotype:	IgG1
Cross-Reactivity:	Human
Characteristics:	Antibody Reactive Against Recombinant Protein.

## Target Details

---

Target:	RAPGEF2
Alternative Name:	RAPGEF2 ( <a href="#">RAPGEF2 Products</a> )
Background:	Full Gene Name: Rap guanine nucleotide exchange factor (GEF) 2 Synonyms: CNrasGEF,NRAPGEP,PDZ-GEF1,PDZGEF1,RA-GEF,Rap-GEP
Gene ID:	9693
NCBI Accession:	<a href="#">XM_376350</a>
Pathways:	<a href="#">Neurotrophin Signaling Pathway</a>

## Application Details

---

Application Notes:	Optimal working dilution should be determined by the investigator.
Restrictions:	For Research Use only

## Handling

---

Buffer:	In 1x PBS, pH 7.4
Handling Advice:	Aliquot to avoid repeated freezing and thawing.
Storage:	-20 °C
Storage Comment:	Store at -20°C or lower. Aliquot to avoid repeated freezing and thawing.

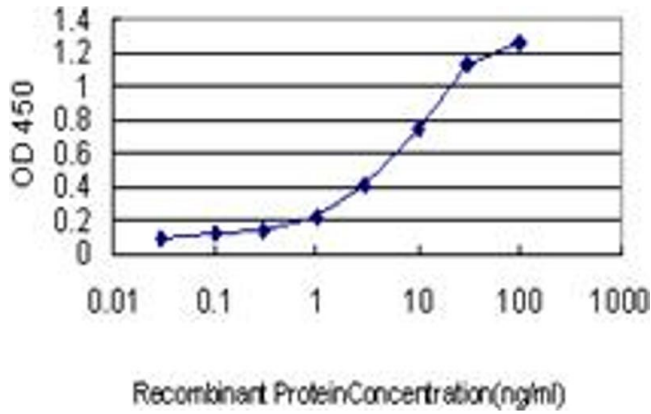
## Publications

---

Product cited in: Gloerich, ten Klooster, Vliem, Koorman, Zwartkruis, Clevers, Bos: "Rap2A links intestinal cell polarity to brush border formation." in: **Nature cell biology**, Vol. 14, Issue 8, pp. 793-801, (2012) ([PubMed](#)).

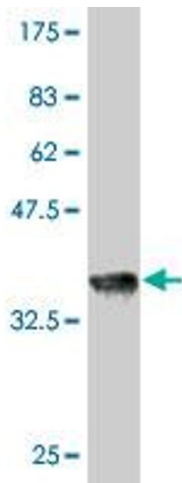
Pannekoek, van Dijk, Chan, Huveneers, Linnemann, Spanjaard, Brouwer, van der Meer, Zwartkruis, Rehmann, de Rooij, Bos: "Epac1 and PDZ-GEF cooperate in Rap1 mediated endothelial junction control." in: **Cellular signalling**, Vol. 23, Issue 12, pp. 2056-64, (2011) ([PubMed](#)).

Letschka, Kollmann, Pfeifhofer-Obermair, Lutz-Nicoladoni, Obermair, Fresser, Leitges, Hermann-Kleiter, Kaminski, Baier: "PKC-theta selectively controls the adhesion-stimulating molecule Rap1." in: **Blood**, Vol. 112, Issue 12, pp. 4617-27, (2008) ([PubMed](#)).



**ELISA**

**Image 1.** Detection limit for recombinant GST tagged RAPGEF2 is approximately 0.1ng/ml as a capture antibody.



**Western Blotting**

**Image 2.** Western Blot detection against Immunogen (35.64 KDa) .