



[Go to Product page](#)

Datasheet for ABIN564183

anti-Separase antibody (AA 586-701)

3 Images

7 Publications

Overview

Quantity:	100 µg
Target:	Separase (ESPL1)
Binding Specificity:	AA 586-701
Reactivity:	Human
Host:	Mouse
Clonality:	Monoclonal
Conjugate:	This Separase antibody is un-conjugated
Application:	ELISA, Western Blotting (WB), Immunohistochemistry (Paraffin-embedded Sections) (IHC (p))

Product Details

Purpose:	Mouse monoclonal antibody raised against a partial recombinant ESPL1.
Immunogen:	ESPL1 (NP_036423, 586 a.a. ~ 701 a.a) partial recombinant protein with GST tag. MW of the GST tag alone is 26 KDa.
Sequence:	REELQAYKAV RADTGQERFN IICDLELSP EETPAGAWAR ATHLVELAQV LCYHDFTQQT NCSALDAIRE ALQLLDsvrp EAQARDQLLD DKAQALLWLY ICTLEAKIQE GIERDR
Clone:	6H6
Isotype:	IgG2a
Cross-Reactivity:	Human
Characteristics:	Antibody Reactive Against Recombinant Protein.

Target Details

Target:	Separase (ESPL1)
Alternative Name:	ESPL1 (ESPL1 Products)
Background:	Full Gene Name: extra spindle pole bodies homolog 1 (S. cerevisiae) Synonyms: ESP1,FLJ46492,KIAA0165,SEPARASE,SEPARIN
Gene ID:	9700
NCBI Accession:	NM_012291

Application Details

Application Notes:	Optimal working dilution should be determined by the investigator.
Restrictions:	For Research Use only

Handling

Buffer:	In 1x PBS, pH 7.4
Handling Advice:	Aliquot to avoid repeated freezing and thawing.
Storage:	-20 °C
Storage Comment:	Store at -20°C or lower. Aliquot to avoid repeated freezing and thawing.

Publications

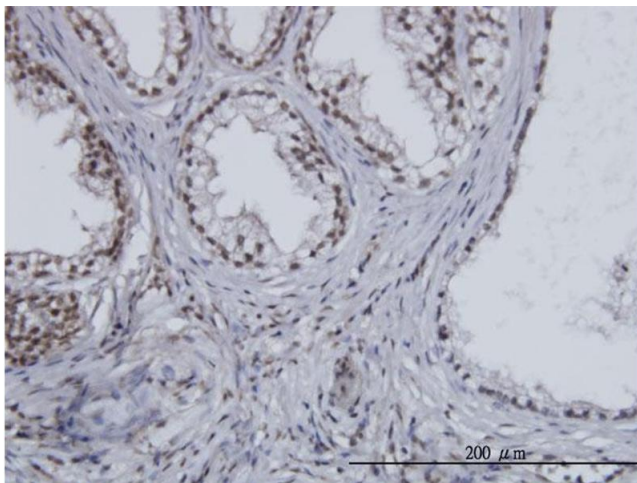
Product cited in:	<p>Mukherjee, Ge, Zhang, Edwards, Sumazin, Sharan, Rao, Medina, Pati: "MMTV-Espl1 transgenic mice develop aneuploid, estrogen receptor alpha (ER⁺)-positive mammary adenocarcinomas." in: Oncogene, Vol. 33, Issue 48, pp. 5511-22, (2014) (PubMed).</p> <p>Mukherjee, Byrd, Brawley, Bielamowicz, Li, Merchant, Maitra, Sumazin, Fuller, Kew, Sun, Powell, Ahmed, Zhang, Pati: "Overexpression and constitutive nuclear localization of cohesin protease Separase protein correlates with high incidence of relapse and reduced overall survival in glioblastoma multiforme." in: Journal of neuro-oncology, Vol. 119, Issue 1, pp. 27-35, (2014) (PubMed).</p> <p>Zhang, Scorsone, Ge, Kaffes, Dobrolecki, Mukherjee, Lewis, Berg, Stephan, Pati: "Identification and Characterization of Separase Inhibitors (Sepins) for Cancer Therapy." in: Journal of biomolecular screening, Vol. 19, Issue 6, pp. 878-889, (2014) (PubMed).</p>
-------------------	--

Mukherjee, Ge, Zhang, Huang, Nakamura, Minor, Fofanov, Rao, Herron, Pati: "Separase loss of function cooperates with the loss of p53 in the initiation and progression of T- and B-cell lymphoma, leukemia and aneuploidy in mice." in: **PLoS ONE**, Vol. 6, Issue 7, pp. e22167, (2011) ([PubMed](#)).

Panigrahi, Zhang, Mao, Pati: "Calpain-1 cleaves Rad21 to promote sister chromatid separation." in: **Molecular and cellular biology**, Vol. 31, Issue 21, pp. 4335-47, (2011) ([PubMed](#)).

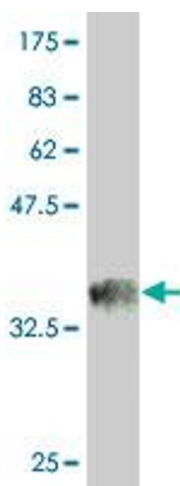
There are more publications referencing this product on: [Product page](#)

Images



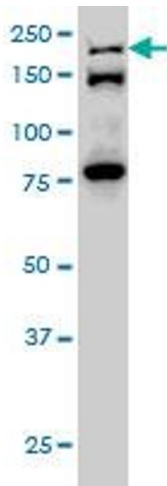
Immunostaining

Image 1. Immunoperoxidase of monoclonal antibody to ESPL1 on formalin-fixed paraffin-embedded human prostate. [antibody concentration 3 ug/ml]



Western Blotting

Image 2. Western Blot detection against Immunogen (38.5 kDa).



Western Blotting

Image 3. ESPL1 monoclonal antibody (M01), clone 6H6
Western Blot analysis of ESPL1 expression in HeLa S3 NE .