



[Go to Product page](#)

Datasheet for ABIN564207

## anti-KNTC1 antibody (AA 2100-2209)

4 Images

2 Publications

### Overview

Quantity:	100 µg
Target:	KNTC1
Binding Specificity:	AA 2100-2209
Reactivity:	Human
Host:	Mouse
Clonality:	Monoclonal
Conjugate:	This KNTC1 antibody is un-conjugated
Application:	Western Blotting (WB), ELISA, Immunofluorescence (IF)

### Product Details

Purpose:	Mouse monoclonal antibody raised against a partial recombinant KNTC1.
Immunogen:	KNTC1 (NP_055523, 2100 a.a. ~ 2209 a.a) partial recombinant protein with GST tag. MW of the GST tag alone is 26 KDa.
Sequence:	DPQVILKQLE EHMNTGQLAG FSHQIRSLIL NNIINKKEFG ILAKTKYFQM LKMHAMNTNN ITELVNYLAN DLSDLDEASVL ITEYSKHCGK PVPPDTAPCE ILKMFLSGLS
Clone:	10H4
Isotype:	IgG2a
Cross-Reactivity:	Human
Characteristics:	Antibody Reactive Against Recombinant Protein.

## Target Details

---

Target:	KNTC1
Alternative Name:	KNTC1 ( <a href="#">KNTC1 Products</a> )
Background:	Full Gene Name: kinetochore associated 1 Synonyms: FLJ36151,KIAA0166,ROD
Gene ID:	9735
NCBI Accession:	<a href="#">NM_014708</a>

## Application Details

---

Application Notes:	Optimal working dilution should be determined by the investigator.
Restrictions:	For Research Use only

## Handling

---

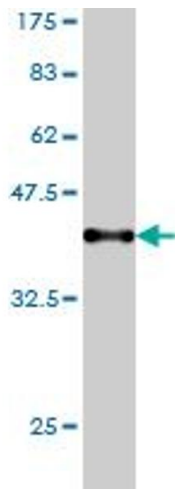
Buffer:	In 1x PBS, pH 7.4
Handling Advice:	Aliquot to avoid repeated freezing and thawing.
Storage:	-20 °C
Storage Comment:	Store at -20°C or lower. Aliquot to avoid repeated freezing and thawing.

## Publications

---

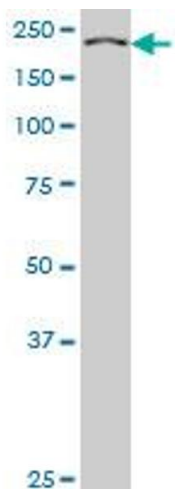
Product cited in: Chan, Fava, Uldschmid, Schmitz, Gerlich, Nigg, Santamaria: "Mitotic control of kinetochore-associated dynein and spindle orientation by human Spindly." in: **The Journal of cell biology**, Vol. 185, Issue 5, pp. 859-74, (2009) ([PubMed](#)).

Sarfraz, Hamid, Ali, Jafri, Siddiqui: "Modulations of cell cycle checkpoints during HCV associated disease." in: **BMC infectious diseases**, Vol. 9, pp. 125, (2009) ([PubMed](#)).



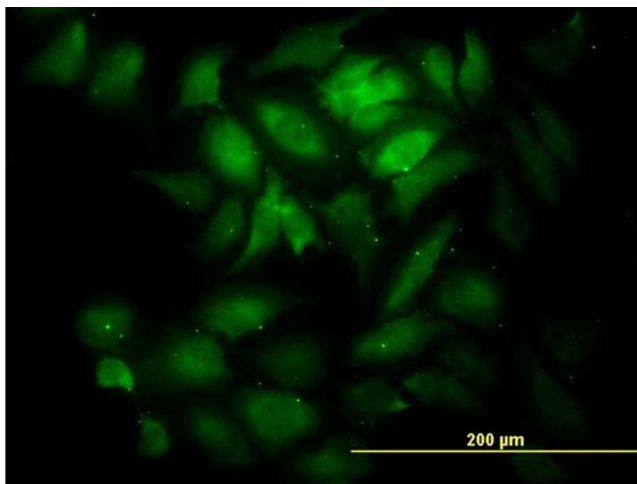
#### Western Blotting

**Image 1.** Western Blot detection against Immunogen (37.84 KDa) .



#### Western Blotting

**Image 2.** KNTC1 monoclonal antibody (M01), clone 10H4 Western Blot analysis of KNTC1 expression in HeLa S3 NE .



#### Immunofluorescence

**Image 3.** Immunofluorescence of monoclonal antibody to KNTC1 on HeLa cell. [antibody concentration 50 ug/ml]

Please check the [product details page](#) for more images. Overall 4 images are available for ABIN564207.