

Datasheet for ABIN564231  
**anti-GIT2 antibody (AA 1-471)**

5 Images



[Go to Product page](#)

## Overview

|                      |   |
|----------------------|---|
| Quantity:            | 100 µg  |
| Target:              | GIT2  |
| Binding Specificity: | AA 1-471  |
| Reactivity:          | Human   |
| Host:                | Mouse   |
| Clonality:           | Monoclonal  |
| Conjugate:           | This GIT2 antibody is un-conjugated   |
| Application:         | Western Blotting (WB), ELISA, Immunofluorescence (IF), Immunoprecipitation (IP) |

## Product Details

|            |  |
|------------|--|
| Purpose:   | Mouse monoclonal antibody raised against a full length recombinant GIT2.   |
| Immunogen: | GIT2 (AAH01379, 1 a.a. ~ 471 a.a) full-length recombinant protein with GST tag. MW of the GST tag alone is 26 KDa.   |
| Sequence:  | MSKRLRSSEV CADCSGPDPS WASVNRGTFL CDECCSVHRS LGRHISQVRH LKHTPW PPTL<br>LQMVETLYNN GANSIWEHSL LDPASIMSGR RKANPQDKVH PNKAEFIRAK YQMLAFVHRL<br>PCRDDDSVTA KDLSKQLHSS VRTGNLETCL RLLSLGAQAN FFHPEKGNTP LHVASKAGQI<br>LQAELLAVYG ADPGTQDSSG KTPVDYARQG GHHELAERLV EIQYELTDRL AFYLCGRKPD<br>HKNGQHFIIP QMADSSLDLS ELAKAAKKKL QLSNHLFEE LAMDMYDEVD RRETDVWLA<br>TQNHSAVTE TTVVPFLPVN PEYSSTRNQG RQKLARFNAH EFATLVIDIL SDAKRRQQGS<br>SLSGSKDNVE LILKTINNQH SVESQDNDQP DYDSVASDED TDLETTASKT NRQKSLDSDL<br>SDGPVTVQEF MEVKNALVAS EAKIQQLMKV NNNLSDELRI MQKLLGKDA N |

## Product Details

---

|                   |  |
|-------------------|--|
| Clone:            | M1   |
| Isotype:          | IgG2a  |
| Cross-Reactivity: | Human  |
| Characteristics:  | Antibody Reactive Against Recombinant Protein. |

## Target Details

---

|                   |  |
|-------------------|--|
| Target:           | GIT2   |
| Alternative Name: | GIT2 ( <a href="#">GIT2 Products</a> )   |
| Background:       | Full Gene Name: G protein-coupled receptor kinase interacting ArfGAP 2<br>Synonyms: CAT-2,DKFZp686G01261,KIAA0148,MGC760 |
| Gene ID:          | 9815   |
| Pathways:         | <a href="#">Regulation of G-Protein Coupled Receptor Protein Signaling</a>   |

## Application Details

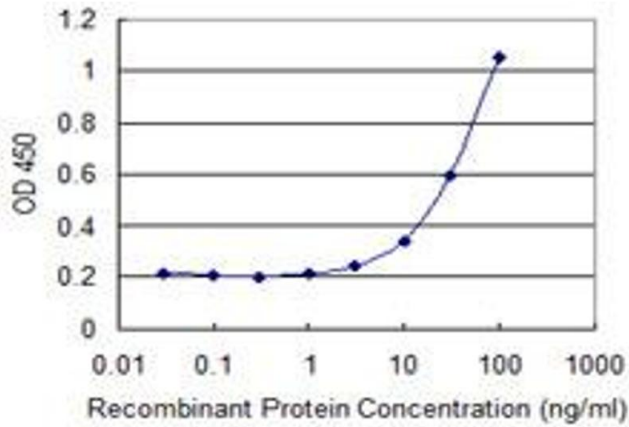
---

|                    |  |
|--------------------|--|
| Application Notes: | Optimal working dilution should be determined by the investigator. |
| Restrictions:      | For Research Use only  |

## Handling

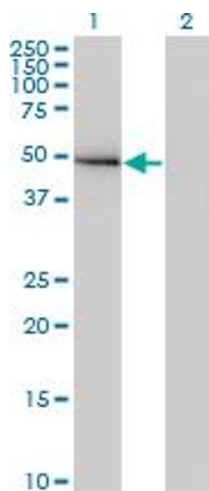
---

|                  |  |
|------------------|--|
| Buffer:          | In 1x PBS, pH 7.4  |
| Handling Advice: | Aliquot to avoid repeated freezing and thawing.                          |
| Storage:         | -20 °C   |
| Storage Comment: | Store at -20°C or lower. Aliquot to avoid repeated freezing and thawing. |



### ELISA

**Image 1.** Detection limit for recombinant GST tagged GIT2 is 1 ng/ml as a capture antibody.

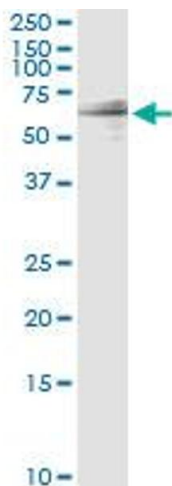


### Western Blotting

**Image 2.** Western Blot analysis of GIT2 expression in transfected 293T cell line by GIT2 monoclonal antibody (M03), clone M1.

Lane 1: GIT2 transfected lysate (Predicted MW: 52.6 KDa).

Lane 2: Non-transfected lysate.



### Immunoprecipitation

**Image 3.** Immunoprecipitation of GIT2 transfected lysate using anti-GIT2 monoclonal antibody and Protein A Magnetic Bead, and immunoblotted with GIT2 MaxPab rabbit polyclonal antibody.

Please check the [product details page](#) for more images. Overall 5 images are available for ABIN564231.