



[Go to Product page](#)

Datasheet for ABIN564245
anti-MAGI2 antibody (AA 519-628)

1 Image

Overview

Quantity:	50 µL
Target:	MAGI2
Binding Specificity:	AA 519-628
Reactivity:	Human
Host:	Mouse
Clonality:	Polyclonal
Conjugate:	This MAGI2 antibody is un-conjugated
Application:	ELISA, Western Blotting (WB)

Product Details

Purpose:	Mouse polyclonal antibody raised against a partial recombinant MAGI2.
Immunogen:	MAGI2 (NP_036433, 519 a.a. ~ 628 a.a) partial recombinant protein with GST tag.
Sequence:	PANSMVPPLA IMERPPVMV NGRHNYETYL EYISRTSQSV PDITDRPPHS LHSMPDGGQL DGTYPVPVHD DNVSMASGGA TQAELMTLTI VKGAQGGFT IADSPTGQRV
Cross-Reactivity:	Human
Characteristics:	Antibody Reactive Against Recombinant Protein.

Target Details

Target:	MAGI2
Alternative Name:	MAGI2 (MAGI2 Products)

Target Details

Background:	Full Gene Name: membrane associated guanylate kinase, WW and PDZ domain containing 2 Synonyms: ACVRIP1,AIP1,ARIP1,MAGI-2,SSCAM
Gene ID:	9863
NCBI Accession:	NM_012301
Pathways:	Neurotrophin Signaling Pathway

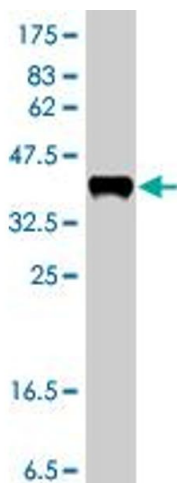
Application Details

Application Notes:	Optimal working dilution should be determined by the investigator.
Restrictions:	For Research Use only

Handling

Format:	Liquid
Buffer:	50 % glycerol
Handling Advice:	Aliquot to avoid repeated freezing and thawing.
Storage:	-20 °C
Storage Comment:	Store at -20°C or lower. Aliquot to avoid repeated freezing and thawing.

Images



Western Blotting

Image 1. Western Blot detection against Immunogen (38.21 KDa) .