



Datasheet for ABIN564250
anti-AREL1 antibody (AA 24-123)



[Go to Product page](#)

3 Images

Overview

Quantity:	50 µL
Target:	AREL1
Binding Specificity:	AA 24-123
Reactivity:	Human
Host:	Mouse
Clonality:	Polyclonal
Conjugate:	This AREL1 antibody is un-conjugated
Application:	Western Blotting (WB), ELISA

Product Details

Purpose:	Mouse polyclonal antibody raised against a partial recombinant KIAA0317.
Immunogen:	KIAA0317 (NP_055636, 24 a.a. ~ 123 a.a) partial recombinant protein with GST tag.
Sequence:	ELAARVVSFL QNEDRERRGD RTIYDYVRGN YLDPRSCKVS WDWKDPYEVG HSMAFRVHLF YKNGQPFAH RPVGLRVHIS HVELAVEIPV NQEVLPQEPNS
Cross-Reactivity:	Human
Characteristics:	Antibody Reactive Against Recombinant Protein.

Target Details

Target:	AREL1
Alternative Name:	KIAA0317 (AREL1 Products)

Target Details

Background: Full Gene Name: KIAA0317
Synonyms:

Gene ID: 9870

NCBI Accession: [NM_014821](#)

Application Details

Application Notes: Optimal working dilution should be determined by the investigator.

Restrictions: For Research Use only

Handling

Format: Liquid

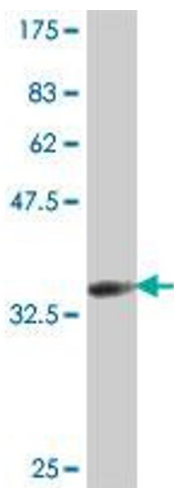
Buffer: 50 % glycerol

Handling Advice: Aliquot to avoid repeated freezing and thawing.

Storage: -20 °C

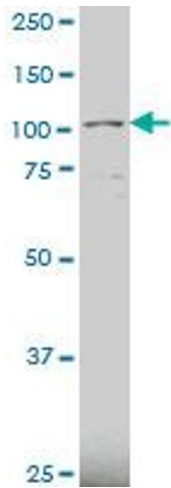
Storage Comment: Store at -20°C or lower. Aliquot to avoid repeated freezing and thawing.

Images



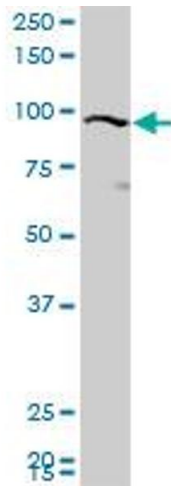
Western Blotting

Image 1. Western Blot detection against Immunogen (37.11 kDa).



Western Blotting

Image 2. KIAA0317 polyclonal antibody (A01), Lot # 051207JC01 Western Blot analysis of KIAA0317 expression in U-2 OS .



Western Blotting

Image 3. KIAA0317 polyclonal antibody (A01), Lot # 060807QCS1. Western Blot analysis of KIAA0317 expression in HL-60.