



Datasheet for ABIN564260  
**anti-NCAPD2 antibody (AA 1240-1339)**



[Go to Product page](#)

6 Images

Overview

|                      |  |
|----------------------|--|
| Quantity:            | 100 µg   |
| Target:              | NCAPD2   |
| Binding Specificity: | AA 1240-1339   |
| Reactivity:          | Human  |
| Host:                | Mouse  |
| Clonality:           | Monoclonal   |
| Conjugate:           | This NCAPD2 antibody is un-conjugated  |
| Application:         | Western Blotting (WB), ELISA, Immunofluorescence (IF), Immunohistochemistry (Paraffin-embedded Sections) (IHC (p)) |

Product Details

|                   |   |
|-------------------|---|
| Purpose:          | Mouse monoclonal antibody raised against a partial recombinant CNAP1.   |
| Immunogen:        | CNAP1 (AAH28182, 1240 a.a. ~ 1339 a.a) partial recombinant protein with GST tag. MW of the GST tag alone is 26 KDa. |
| Sequence:         | LRKMLDNFDC FGDKLSDESI FSAFLSVVGK LRRGAKPEGK AIIDEFEQKL RACHTRGLDG<br>IKELEIGQAG SQRAPSAKKP SSGSRYQPLA STASDNDNFVT   |
| Clone:            | 4C12  |
| Isotype:          | IgG1  |
| Cross-Reactivity: | Human   |
| Characteristics:  | Antibody Reactive Against Recombinant Protein.  |

## Target Details

|                   |  |
|-------------------|--|
| Target:           | NCAPD2   |
| Alternative Name: | NCAPD2 ( <a href="#">NCAPD2 Products</a> )   |
| Background:       | Full Gene Name: non-SMC condensin I complex, subunit D2<br>Synonyms: CAP-D2,CNAP1,KIAA0159,hCAP-D2 |
| Gene ID:          | 9918   |

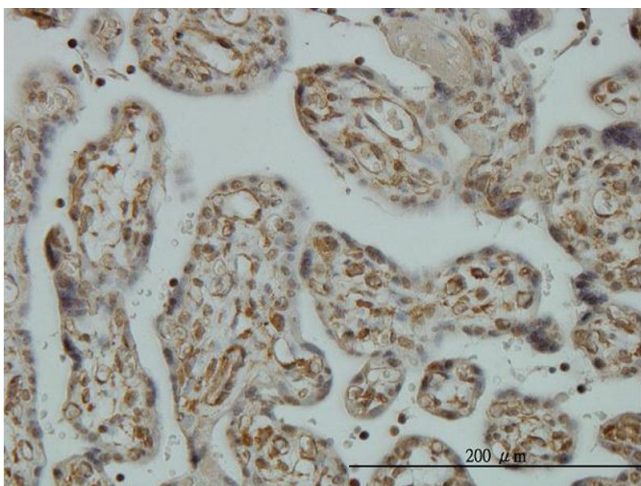
## Application Details

|                    |  |
|--------------------|--|
| Application Notes: | Optimal working dilution should be determined by the investigator. |
| Restrictions:      | For Research Use only  |

## Handling

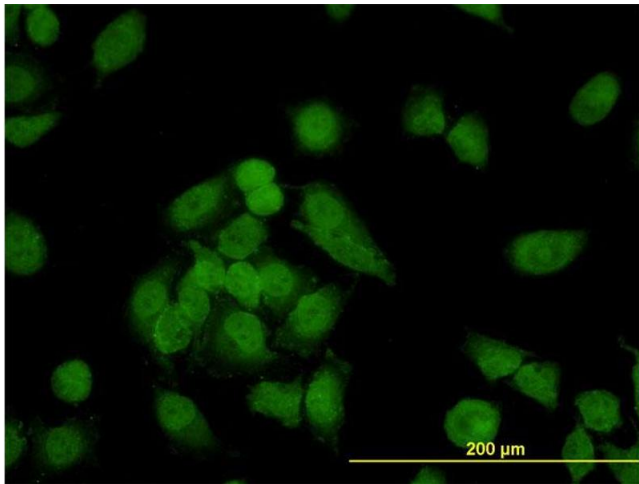
|                  |  |
|------------------|--|
| Buffer:          | In 1x PBS, pH 7.4  |
| Handling Advice: | Aliquot to avoid repeated freezing and thawing.                          |
| Storage:         | -20 °C   |
| Storage Comment: | Store at -20°C or lower. Aliquot to avoid repeated freezing and thawing. |

## Images



### Immunostaining

**Image 1.** Immunoperoxidase of monoclonal antibody to CNAP1 on formalin-fixed paraffin-embedded human placenta. [antibody concentration 3 ug/ml]



### Immunofluorescence

**Image 2.** Immunofluorescence of monoclonal antibody to CNAP1 on HeLa cell. [antibody concentration 10 ug/ml]



### Western Blotting

**Image 3.** CNAP1 monoclonal antibody (M01), clone 4C12 Western Blot analysis of CNAP1 expression in HeLa .

Please check the [product details page](#) for more images. Overall 6 images are available for ABIN564260.