



[Go to Product page](#)

Datasheet for ABIN564292

## anti-CLEC2B antibody (AA 52-149)

### 1 Image

#### Overview

Quantity:	50 µL
Target:	CLEC2B
Binding Specificity:	AA 52-149
Reactivity:	Human
Host:	Mouse
Clonality:	Polyclonal
Conjugate:	This CLEC2B antibody is un-conjugated
Application:	ELISA, Western Blotting (WB)

#### Product Details

Purpose:	Mouse polyclonal antibody raised against a partial recombinant CLEC2B.
Immunogen:	CLEC2B (NP_005118, 52 a.a. ~ 149 a.a) partial recombinant protein with GST tag.
Sequence:	EEGDWNSSKY NCSTQHADLT IIDNIEEMNF LRRYKCSSDH WIGLKMAKNR TGQWVDGATF TKSFGMRGSE GCAYLSDDGA ATARCYTERK WICRKRIH
Cross-Reactivity:	Human
Characteristics:	Antibody Reactive Against Recombinant Protein.

#### Target Details

Target:	CLEC2B
Alternative Name:	CLEC2B ( <a href="#">CLEC2B Products</a> )

## Target Details

Background:	Full Gene Name: C-type lectin domain family 2, member B Synonyms: AICL,CLECSF2,HP10085,IFNRG1
Gene ID:	9976
NCBI Accession:	<a href="#">NM_005127</a>

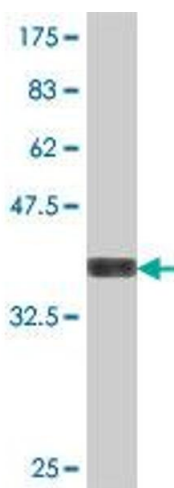
## Application Details

Application Notes:	Optimal working dilution should be determined by the investigator.
Restrictions:	For Research Use only

## Handling

Format:	Liquid
Buffer:	50 % glycerol
Handling Advice:	Aliquot to avoid repeated freezing and thawing.
Storage:	-20 °C
Storage Comment:	Store at -20°C or lower. Aliquot to avoid repeated freezing and thawing.

## Images



### Western Blotting

**Image 1.** Western Blot detection against Immunogen (36.89 KDa) .