



[Go to Product page](#)

Datasheet for ABIN564294

anti-RCE1/FACE2 antibody (AA 133-182)

1 Image

Overview

Quantity:	100 µg
Target:	RCE1/FACE2 (RCE1)
Binding Specificity:	AA 133-182
Reactivity:	Human
Host:	Mouse
Clonality:	Monoclonal
Conjugate:	This RCE1/FACE2 antibody is un-conjugated
Application:	ELISA, Western Blotting (WB)

Product Details

Purpose:	Mouse monoclonal antibody raised against a partial recombinant RCE1.
Immunogen:	RCE1 (NP_005124, 133 a.a. ~ 182 a.a) partial recombinant protein with GST tag. MW of the GST tag alone is 26 KDa.
Sequence:	QLSMDCPCDL ADGLKVVLP RSWARCLTDM RWLRNQVIAP LTEELVFRAC
Clone:	6A6
Isotype:	IgG2a
Cross-Reactivity:	Human
Characteristics:	Antibody Reactive Against Recombinant Protein.

Target Details

Target:	RCE1/FACE2 (RCE1)
Alternative Name:	RCE1 (RCE1 Products)
Background:	Full Gene Name: RCE1 homolog, prenyl protein peptidase (<i>S. cerevisiae</i>) Synonyms: FACE2,RCE1A,RCE1B
Gene ID:	9986
NCBI Accession:	NM_005133

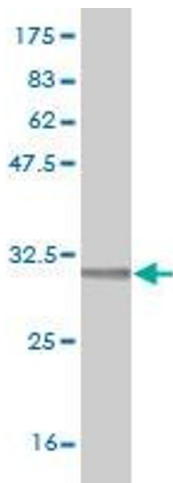
Application Details

Application Notes:	Optimal working dilution should be determined by the investigator.
Restrictions:	For Research Use only

Handling

Buffer:	In 1x PBS, pH 7.4
Handling Advice:	Aliquot to avoid repeated freezing and thawing.
Storage:	-20 °C
Storage Comment:	Store at -20°C or lower. Aliquot to avoid repeated freezing and thawing.

Images



Western Blotting

Image 1. Western Blot detection against Immunogen (31.24 kDa).