



[Go to Product page](#)

Datasheet for ABIN564309

## anti-NR2E3 antibody (AA 1-322)

### 3 Images

#### Overview

Quantity:	100 µg
Target:	NR2E3
Binding Specificity:	AA 1-322
Reactivity:	Human
Host:	Mouse
Clonality:	Monoclonal
Conjugate:	This NR2E3 antibody is un-conjugated
Application:	Western Blotting (WB), ELISA

#### Product Details

Purpose:	Mouse monoclonal antibody raised against a full length recombinant NR2E3.
Immunogen:	NR2E3 (AAH41421, 1 a.a. ~ 322 a.a) full-length recombinant protein with GST tag. MW of the GST tag alone is 26 KDa.
Sequence:	MCPVDKAHRN QCQACRLKKC LQAGMNQDAV QNERQPRSTA QVHLDMESN TESRPESLVA PPAPAGRSPR GPTPMSAARA LGHHFMASLI TAETCAKLEP EDADENIDVT SNDPEFPSSP YSSSSPCGLD SIHETSARLL FMAVKWAKNL PVFSSLPFRD QVILLEEAW S ELFLLGAIQW SLPLDSCPLL APPEASAAGG AQGRLTLASM ETRVLQETIS RFRALAVDPT EFACMKALVL FKPETRGLKD PEHVEALQDQ SQVMLSQHSK AHHPSPVRF GKLLLLLPSL RFITAERIEL LFFRKTIGNT PMEKLLCDMF KN
Clone:	2A12
Isotype:	IgG1

## Product Details

---

Cross-Reactivity: Human

Characteristics: Antibody Reactive Against Recombinant Protein.

## Target Details

---

Target: NR2E3

Alternative Name: NR2E3 ([NR2E3 Products](#))

Background: Full Gene Name: nuclear receptor subfamily 2, group E, member 3  
Synonyms: ESCS,MGC49976,PNR,RNR,RP37,rd7

Gene ID: 10002

Pathways: [Nuclear Receptor Transcription Pathway](#), [Steroid Hormone Mediated Signaling Pathway](#)

## Application Details

---

Application Notes: Optimal working dilution should be determined by the investigator.

Restrictions: For Research Use only

## Handling

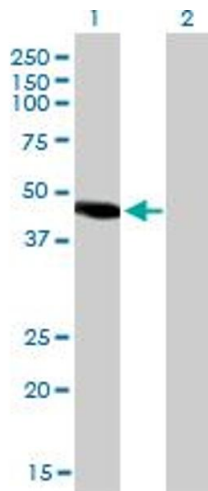
---

Buffer: In 1x PBS, pH 7.4

Handling Advice: Aliquot to avoid repeated freezing and thawing.

Storage: -20 °C

Storage Comment: Store at -20°C or lower. Aliquot to avoid repeated freezing and thawing.

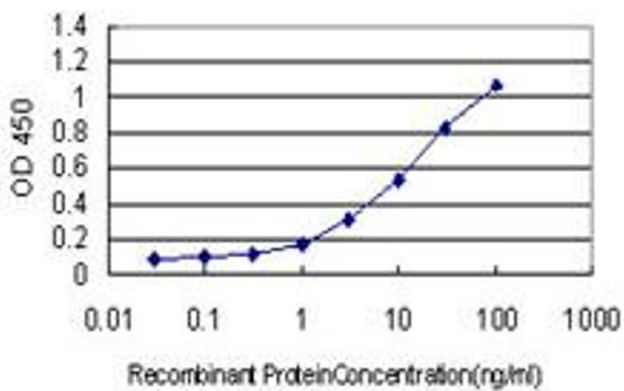


### Western Blotting

**Image 1.** Western Blot analysis of NR2E3 expression in transfected 293T cell line by NR2E3 monoclonal antibody (M01), clone 2A12.

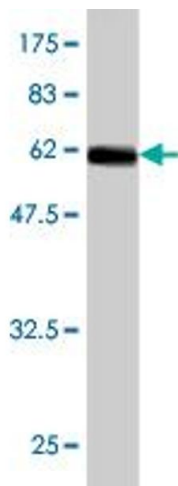
Lane 1: NR2E3 transfected lysate(44.7 KDa).

Lane 2: Non-transfected lysate.



### ELISA

**Image 2.** Detection limit for recombinant GST tagged NR2E3 is approximately 0.3ng/ml as a capture antibody.



### Western Blotting

**Image 3.** Western Blot detection against Immunogen (61.16 KDa) .