



Datasheet for ABIN564327  
**anti-TOM1 antibody (AA 394-491)**



[Go to Product page](#)

1 Image

Overview

Quantity:	50 µL
Target:	TOM1
Binding Specificity:	AA 394-491
Reactivity:	Human
Host:	Mouse
Clonality:	Polyclonal
Conjugate:	This TOM1 antibody is un-conjugated
Application:	Western Blotting (WB), ELISA

Product Details

Purpose:	Mouse polyclonal antibody raised against a partial recombinant TOM1.
Immunogen:	TOM1 (NP_005479, 394 a.a. ~ 491 a.a) partial recombinant protein with GST tag.
Sequence:	GLAGALDARQ QSTGAIPVTQ ACLMEDIEQW LSTDVGNDAE EPKGVTSEEF DKFLEERAKA ADRLPNLSSP SAEGPPGPPS GPAPRKKKTQE KDDDMLFA
Cross-Reactivity:	Human
Characteristics:	Antibody Reactive Against Recombinant Protein.

Target Details

Target:	TOM1
Alternative Name:	TOM1 ( <a href="#">TOM1 Products</a> )

## Target Details

Background: Full Gene Name: target of myb1 (chicken)  
Synonyms: FLJ33404

Gene ID: 10043

NCBI Accession: [NM\\_005488](#)

## Application Details

Application Notes: Optimal working dilution should be determined by the investigator.

Restrictions: For Research Use only

## Handling

Format: Liquid

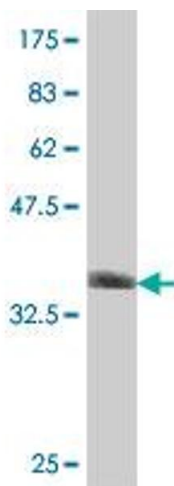
Buffer: 50 % glycerol

Handling Advice: Aliquot to avoid repeated freezing and thawing.

Storage: -20 °C

Storage Comment: Store at -20°C or lower. Aliquot to avoid repeated freezing and thawing.

## Images



### Western Blotting

**Image 1.** Western Blot detection against Immunogen (36.89 KDa) .