



Datasheet for ABIN564328  
**anti-TOM1 antibody (AA 394-491)**



[Go to Product page](#)

5 Images

Overview

Quantity:	100 µg
Target:	TOM1
Binding Specificity:	AA 394-491
Reactivity:	Human
Host:	Mouse
Clonality:	Monoclonal
Conjugate:	This TOM1 antibody is un-conjugated
Application:	Western Blotting (WB), ELISA, Immunohistochemistry (Paraffin-embedded Sections) (IHC (p))

Product Details

Purpose:	Mouse monoclonal antibody raised against a partial recombinant TOM1.
Immunogen:	TOM1 (NP_005479, 394 a.a. ~ 491 a.a) partial recombinant protein with GST tag. MW of the GST tag alone is 26 KDa.
Sequence:	GLAGALDARQ QSTGAIPVTQ ACLMEDIEQW LSTDVGNDAE EPKGVTSSEF DKFLEERAKA ADRLPNLSSP SAEGPPGPPS GPAPRKKKTQE KDDDMLFA
Clone:	5A3
Isotype:	IgG1
Cross-Reactivity:	Human
Characteristics:	Antibody Reactive Against Recombinant Protein.

## Target Details

Target:	TOM1
Alternative Name:	TOM1 ( <a href="#">TOM1 Products</a> )
Background:	Full Gene Name: target of myb1 (chicken) Synonyms: FLJ33404
Gene ID:	10043
NCBI Accession:	<a href="#">NM_005488</a>

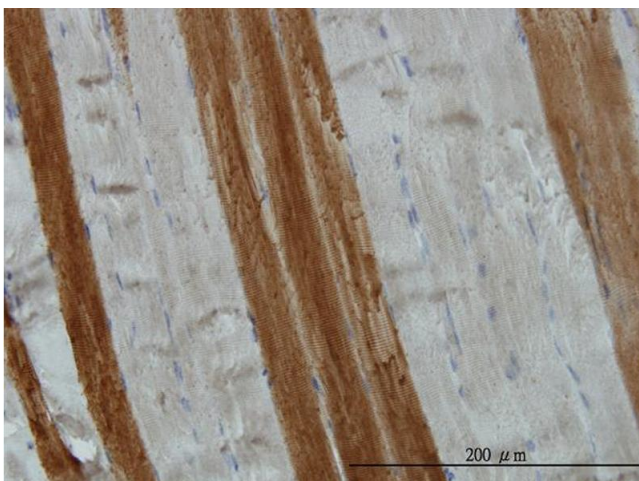
## Application Details

Application Notes:	Optimal working dilution should be determined by the investigator.
Restrictions:	For Research Use only

## Handling

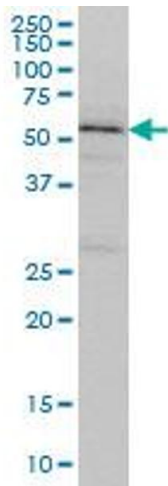
Buffer:	In 1x PBS, pH 7.4
Handling Advice:	Aliquot to avoid repeated freezing and thawing.
Storage:	-20 °C
Storage Comment:	Store at -20°C or lower. Aliquot to avoid repeated freezing and thawing.

## Images



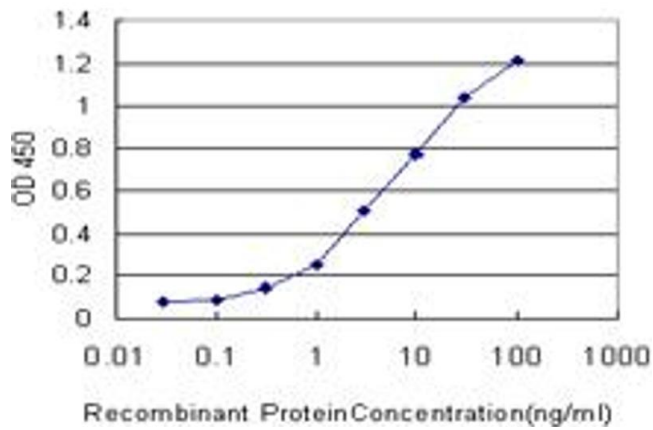
### Immunostaining

**Image 1.** Immunoperoxidase of monoclonal antibody to TOM1 on formalin-fixed paraffin-embedded human skeletal muscle. [antibody concentration 3 ug/ml]



### Western Blotting

**Image 2.** TOM1 monoclonal antibody (M01), clone 5A3 Western Blot analysis of TOM1 expression in K-562 .



### ELISA

**Image 3.** Detection limit for recombinant GST tagged TOM1 is approximately 0.3ng/ml as a capture antibody.

Please check the [product details page](#) for more images. Overall 5 images are available for ABIN564328.