



[Go to Product page](#)

Datasheet for ABIN564330  
**anti-SH2D3C antibody (AA 1-110)**

4 Images

Overview

Quantity:	100 µg
Target:	SH2D3C
Binding Specificity:	AA 1-110
Reactivity:	Human
Host:	Mouse
Clonality:	Monoclonal
Conjugate:	This SH2D3C antibody is un-conjugated
Application:	Western Blotting (WB), ELISA, Immunohistochemistry (Paraffin-embedded Sections) (IHC (p))

Product Details

Purpose:	Mouse monoclonal antibody raised against a partial recombinant SH2D3C.
Immunogen:	SH2D3C (NP_005480, 1 a.a. ~ 110 a.a) partial recombinant protein with GST tag. MW of the GST tag alone is 26 KDa.
Sequence:	MTAVGRRCPA LGSRGAAGEP EAGSDYVKFS KEKYILDSSP EKLHKELEEE LKLSSTDLRS HAWYHGRIPR EVSETLVQRN GDFLIRDLSL SLGDYVLTCT WRNQLHFKI
Clone:	3B2
Isotype:	IgG1
Cross-Reactivity:	Human
Characteristics:	Antibody Reactive Against Recombinant Protein.

## Target Details

Target:	SH2D3C
Alternative Name:	SH2D3C ( <a href="#">SH2D3C Products</a> )
Background:	Full Gene Name: SH2 domain containing 3C Synonyms: CHAT,FLJ39664,NSP3,PRO34088
Gene ID:	10044
NCBI Accession:	<a href="#">NM_005489</a>

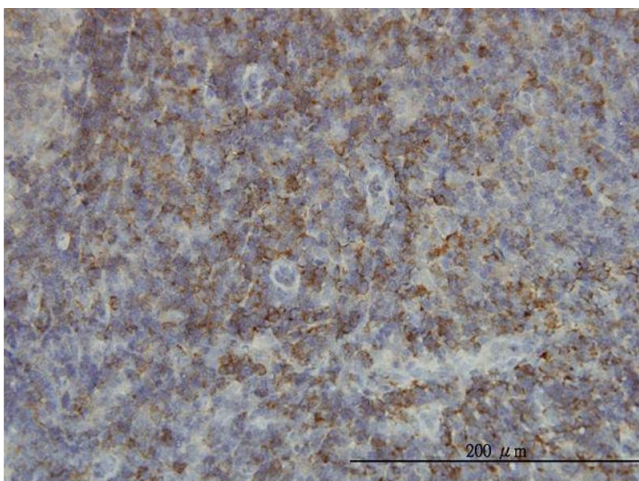
## Application Details

Application Notes:	Optimal working dilution should be determined by the investigator.
Restrictions:	For Research Use only

## Handling

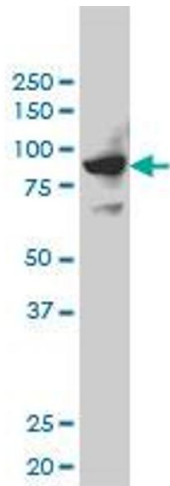
Buffer:	In 1x PBS, pH 7.4
Handling Advice:	Aliquot to avoid repeated freezing and thawing.
Storage:	-20 °C
Storage Comment:	Store at -20°C or lower. Aliquot to avoid repeated freezing and thawing.

## Images



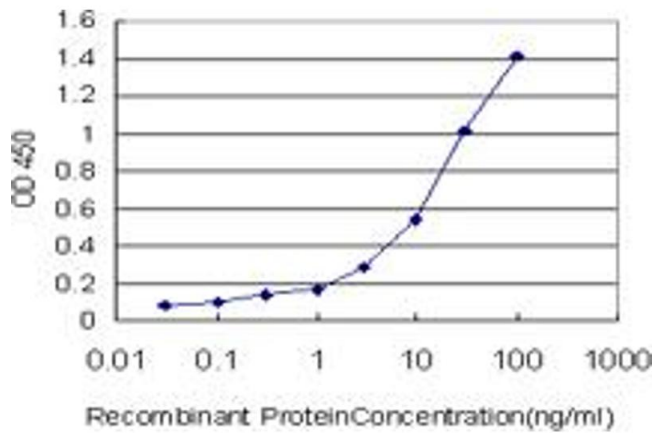
### Immunostaining

**Image 1.** Immunoperoxidase of monoclonal antibody to SH2D3C on formalin-fixed paraffin-embedded human lymph node. [antibody concentration 3 ug/ml]



### Western Blotting

**Image 2.** SH2D3C monoclonal antibody (M01), clone 3B2 Western Blot analysis of SH2D3C expression in HeLa S3 NE .



### ELISA

**Image 3.** Detection limit for recombinant GST tagged SH2D3C is approximately 0.1ng/ml as a capture antibody.

Please check the [product details page](#) for more images. Overall 4 images are available for ABIN564330.