

Datasheet for ABIN564333
anti-SH2D3C antibody (AA 1-110)

4 Images

[Go to Product page](#)

Overview

Quantity:	100 µg
Target:	SH2D3C
Binding Specificity:	AA 1-110
Reactivity:	Human
Host:	Mouse
Clonality:	Monoclonal
Conjugate:	This SH2D3C antibody is un-conjugated
Application:	Western Blotting (WB), ELISA, Immunofluorescence (IF)

Product Details

Purpose:	Mouse monoclonal antibody raised against a partial recombinant SH2D3C.
Immunogen:	SH2D3C (NP_005480, 1 a.a. ~ 110 a.a) partial recombinant protein with GST tag. MW of the GST tag alone is 26 KDa.
Sequence:	MTAVGRRCPA LGSRGAAGEP EAGSDYVKFS KEKYILDSSP EKLHKELEEE LKLSSTDRLS HAWYHGRIPR EVSETLVQRN GDFLIRDSL T SLGDYVLT CR WRNQALHFKI
Clone:	1B6
Isotype:	IgG1
Cross-Reactivity:	Human
Characteristics:	Antibody Reactive Against Recombinant Protein.

Target Details

Target:	SH2D3C
Alternative Name:	SH2D3C (SH2D3C Products)
Background:	Full Gene Name: SH2 domain containing 3C Synonyms: CHAT,FLJ39664,NSP3,PRO34088
Gene ID:	10044
NCBI Accession:	NM_005489

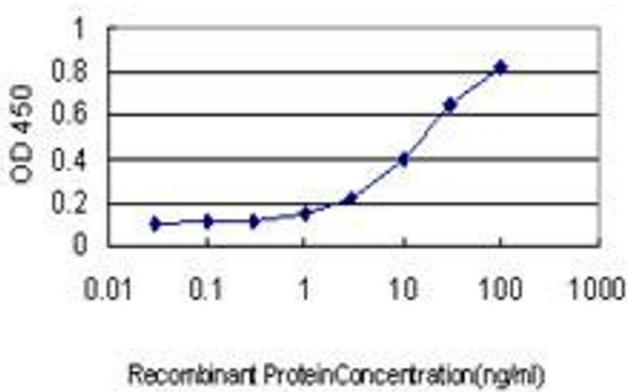
Application Details

Application Notes:	Optimal working dilution should be determined by the investigator.
Restrictions:	For Research Use only

Handling

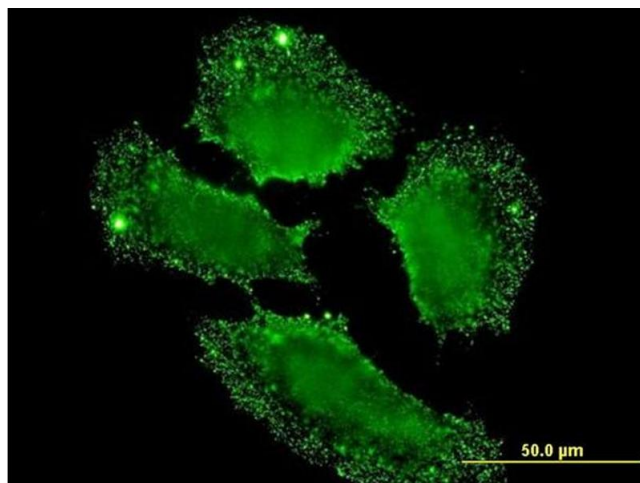
Buffer:	In 1x PBS, pH 7.4
Handling Advice:	Aliquot to avoid repeated freezing and thawing.
Storage:	-20 °C
Storage Comment:	Store at -20°C or lower. Aliquot to avoid repeated freezing and thawing.

Images



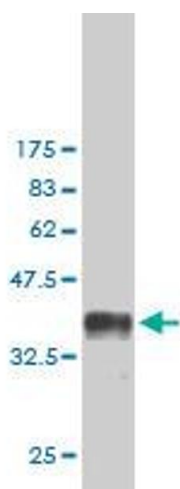
ELISA

Image 1. Detection limit for recombinant GST tagged SH2D3C is approximately 1ng/ml as a capture antibody.



Immunofluorescence

Image 2. Immunofluorescence of monoclonal antibody to SH2D3C on HeLa cell. [antibody concentration 10 ug/ml]



Western Blotting

Image 3. Western Blot detection against Immunogen (37.84 kDa) .

Please check the [product details page](#) for more images. Overall 4 images are available for ABIN564333.