



[Go to Product page](#)

Datasheet for ABIN564360  
**anti-EDIL3 antibody (AA 101-199)**

1 Image

Overview

Quantity:	50 µL
Target:	EDIL3 (DEL1)
Binding Specificity:	AA 101-199
Reactivity:	Human
Host:	Mouse
Clonality:	Polyclonal
Conjugate:	This EDIL3 antibody is un-conjugated
Application:	Western Blotting (WB), ELISA

Product Details

Purpose:	Mouse polyclonal antibody raised against a partial recombinant EDIL3.
Immunogen:	EDIL3 (NP_005702, 101 a.a. ~ 199 a.a) partial recombinant protein with GST tag.
Sequence:	IGYVCKPRG FNGIHCQHNI NECEVEPCKN GGICTDLVAN YSCECPGEFM GRNCQYKCSG PLGIEGGIIS NQQITASSTH RALFGLQKWY PYYARLNKK
Cross-Reactivity:	Human
Characteristics:	Antibody Reactive Against Recombinant Protein.

Target Details

Target:	EDIL3 (DEL1)
Alternative Name:	EDIL3 ( <a href="#">DEL1 Products</a> )

## Target Details

Background:	Full Gene Name: EGF-like repeats and discoidin I-like domains 3 Synonyms: DEL1,MGC26287
Gene ID:	10085
NCBI Accession:	<a href="#">NM_005711</a>

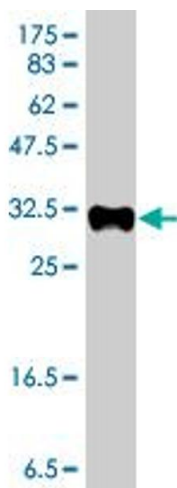
## Application Details

Application Notes:	Optimal working dilution should be determined by the investigator.
Restrictions:	For Research Use only

## Handling

Format:	Liquid
Buffer:	50 % glycerol
Handling Advice:	Aliquot to avoid repeated freezing and thawing.
Storage:	-20 °C
Storage Comment:	Store at -20°C or lower. Aliquot to avoid repeated freezing and thawing.

## Images



### Western Blotting

**Image 1.** Western Blot detection against Immunogen (37 KDa).