

Datasheet for ABIN564397  
**anti-WASF2 antibody (AA 73-172)**[Go to Product page](#)

## 1 Image

## Overview

Quantity:	50 µL
Target:	WASF2
Binding Specificity:	AA 73-172
Reactivity:	Human
Host:	Mouse
Clonality:	Polyclonal
Conjugate:	This WASF2 antibody is un-conjugated
Application:	ELISA, Western Blotting (WB)

## Product Details

Purpose:	Mouse polyclonal antibody raised against a partial recombinant WASF2.
Immunogen:	WASF2 (NP_008921, 73 a.a. ~ 172 a.a) partial recombinant protein with GST tag.
Sequence:	DRLQVKVTQL DPKEEEVSLQ GINTRKAFRS STIQDQKLFD RNSLPVPVLE TYNTCDTPPP LNNLTPYRDD GKEALKFYTD PSYFFDLWKE KMLQDTKDIM
Cross-Reactivity:	Human
Characteristics:	Antibody Reactive Against Recombinant Protein.

## Target Details

Target:	WASF2
Alternative Name:	WASF2 ( <a href="#">WASF2 Products</a> )

### Target Details

Background: Full Gene Name: WAS protein family, member 2  
Synonyms: SCAR2,WAVE2,dJ393P12.2

Gene ID: 10163

NCBI Accession: [NM\\_006990](#)

Pathways: [RTK Signaling](#)

### Application Details

Application Notes: Optimal working dilution should be determined by the investigator.

Restrictions: For Research Use only

### Handling

Format: Liquid

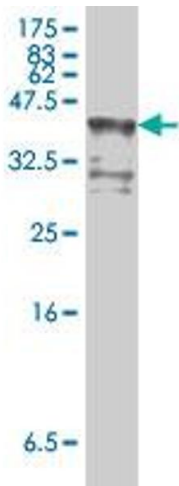
Buffer: 50 % glycerol

Handling Advice: Aliquot to avoid repeated freezing and thawing.

Storage: -20 °C

Storage Comment: Store at -20°C or lower. Aliquot to avoid repeated freezing and thawing.

### Images



#### Western Blotting

**Image 1.** Western Blot detection against Immunogen (37.11 KDa) .