



[Go to Product page](#)

Datasheet for ABIN564412
anti-CALCRL antibody (AA 23-132)

2 Images

Overview

Quantity:	50 µL
Target:	CALCRL
Binding Specificity:	AA 23-132
Reactivity:	Human
Host:	Mouse
Clonality:	Polyclonal
Conjugate:	This CALCRL antibody is un-conjugated
Application:	Western Blotting (WB), ELISA

Product Details

Purpose:	Mouse polyclonal antibody raised against a partial recombinant CALCRL.
Immunogen:	CALCRL (NP_005786, 23 a.a. ~ 132 a.a) partial recombinant protein with GST tag.
Sequence:	ELEESPEDSI QLGVTRNKIM TAQYECYQKI MQDPIQQAEG VYCNRTWDGW LCWNDVAAGT ESMQLCPDYF QDFDPSEKVT KICDQDGNWF RHPASNRTWT NYTQCNVNTH
Cross-Reactivity:	Human
Characteristics:	Antibody Reactive Against Recombinant Protein.

Target Details

Target:	CALCRL
Alternative Name:	CALCRL (CALCRL Products)

Target Details

Background: Full Gene Name: calcitonin receptor-like
Synonyms: CGRPR,CRLR

Gene ID: 10203

NCBI Accession: [NM_005795](#)

Pathways: [cAMP Metabolic Process](#)

Application Details

Application Notes: Optimal working dilution should be determined by the investigator.

Restrictions: For Research Use only

Handling

Format: Liquid

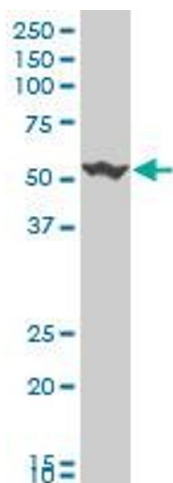
Buffer: 50 % glycerol

Handling Advice: Aliquot to avoid repeated freezing and thawing.

Storage: -20 °C

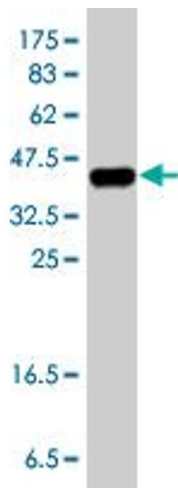
Storage Comment: Store at -20°C or lower. Aliquot to avoid repeated freezing and thawing.

Images



Western Blotting

Image 1. CALCRL polyclonal antibody (A01), Lot # UHK2060109QCS1 Western Blot analysis of CALCRL expression in MCF-7 .



Western Blotting

Image 2. Western Blot detection against Immunogen (38.21 kDa).