



[Go to Product page](#)

Datasheet for ABIN564436

anti-SPRY1 antibody (AA 1-110)

1 Image

1 Publication

Overview

Quantity:	50 µL
Target:	SPRY1
Binding Specificity:	AA 1-110
Reactivity:	Human
Host:	Mouse
Clonality:	Polyclonal
Conjugate:	This SPRY1 antibody is un-conjugated
Application:	Western Blotting (WB), ELISA

Product Details

Purpose:	Mouse polyclonal antibody raised against a partial recombinant SPRY1.
Immunogen:	SPRY1 (NP_005832, 1 a.a. ~ 110 a.a) partial recombinant protein with GST tag.
Sequence:	MDPQNQHSG SSLVVIQQPS LDSRQLDYE REIQPTAILS LDQIKAIRGS NEYTEGPSVV KRPAPRTAPR QEKHERTHEI IPINVNNNYE HRHTSHLGHA VLPSNARGPI
Cross-Reactivity:	Human
Characteristics:	Antibody Reactive Against Recombinant Protein.

Target Details

Target:	SPRY1
Alternative Name:	SPRY1 (SPRY1 Products)

Target Details

Background:	Full Gene Name: sprouty homolog 1, antagonist of FGF signaling (Drosophila) Synonyms: hSPRY1
Gene ID:	10252
NCBI Accession:	NM_005841
Pathways:	EGFR Signaling Pathway , EGFR Downregulation

Application Details

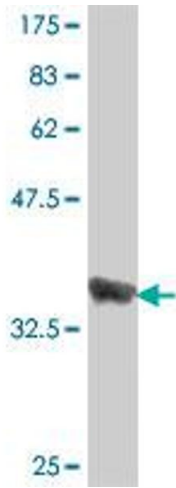
Application Notes:	Optimal working dilution should be determined by the investigator.
Restrictions:	For Research Use only

Handling

Format:	Liquid
Buffer:	50 % glycerol
Handling Advice:	Aliquot to avoid repeated freezing and thawing.
Storage:	-20 °C
Storage Comment:	Store at -20°C or lower. Aliquot to avoid repeated freezing and thawing.

Publications

Product cited in:	Mekkawy, De Bock, Lin, Morris, Wang, Pourgholami: "Novel protein interactors of urokinase-type plasminogen activator receptor." in: Biochemical and biophysical research communications , Vol. 399, Issue 4, pp. 738-43, (2010) (PubMed).
-------------------	--



Western Blotting

Image 1. Western Blot detection against Immunogen (38.21 kDa) .