

Datasheet for ABIN564439

anti-SPRY2 antibody (AA 1-315)

6 Images

3 Publications



[Go to Product page](#)

Overview

Quantity:	100 µg
Target:	SPRY2
Binding Specificity:	AA 1-315
Reactivity:	Human
Host:	Mouse
Clonality:	Monoclonal
Conjugate:	This SPRY2 antibody is un-conjugated
Application:	Western Blotting (WB), ELISA, Immunofluorescence (IF), Immunohistochemistry (Paraffin-embedded Sections) (IHC (p))

Product Details

Purpose:	Mouse monoclonal antibody raised against a full length recombinant SPRY2.
Immunogen:	SPRY2 (AAH15745.1, 1 a.a. ~ 315 a.a) full-length recombinant protein with GST tag. MW of the GST tag alone is 26 KDa.
Sequence:	MEARAQSGNG SQPLLQTPRD GGRQRGEPDP RDALTQQVHV LSLDQIRAIR NTNEYTEGPT VVPRPGLKPA PRPSTQHKHE RLHGLPEHRQ PPRLQHSQVH SSARAPLSRS ISTVSSGSRS STRTSTSSSS SEQRLLGSSF SSGPVADGII RVQPKSELKP GELKPLSKED LGLHAYRCED CGKCKCKECT YPRPLPSDWI CDKQCLCSAQ NVIDYGTCVC CVKGLFYHCS NDEEDNCADN PCSCSQSHCC TRWSAMGVMS LFLPCLWCYL PAKGCLKLCQ GCYDRVNRPG CRCKNSNTVC CKVPTVPPRN FEKPT
Clone:	1E10

Product Details

Isotype:	IgG1
Cross-Reactivity:	Human
Characteristics:	Antibody Reactive Against Recombinant Protein.

Target Details

Target:	SPRY2
Alternative Name:	SPRY2 (SPRY2 Products)
Background:	Full Gene Name: sprouty homolog 2 (Drosophila) Synonyms: MGC23039,hSPRY2
Gene ID:	10253
Pathways:	EGFR Signaling Pathway , Sensory Perception of Sound , EGFR Downregulation

Application Details

Application Notes:	Optimal working dilution should be determined by the investigator.
Restrictions:	For Research Use only

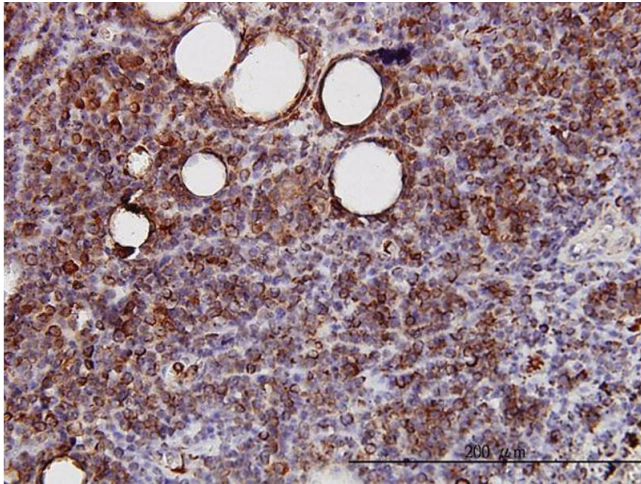
Handling

Buffer:	In 1x PBS, pH 7.4
Handling Advice:	Aliquot to avoid repeated freezing and thawing.
Storage:	-20 °C
Storage Comment:	Store at -20°C or lower. Aliquot to avoid repeated freezing and thawing.

Publications

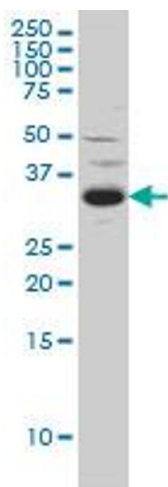
Product cited in:	Ordóñez-Morán, Irmisch, Barbáchano, Chicote, Tenbaum, Landolfi, Tabernero, Huelsken, Muñoz, Pálmer: "SPROUTY2 is a β -catenin and FOXO3a target gene indicative of poor prognosis in colon cancer." in: Oncogene , Vol. 33, Issue 15, pp. 1975-85, (2014) (PubMed).
	Moghaddam, Amini, Wei, Pourgholami, Morris: "Initial report on differential expression of sprouty proteins 1 and 2 in human epithelial ovarian cancer cell lines." in: Journal of oncology , Vol. 2012, pp. 373826, (2012) (PubMed).

Barbáchano, Ordóñez-Morán, García, Sánchez, Pereira, Larriba, Martínez, Hernández, Landolfi, Bonilla, Pálmer, Rojas, Muñoz: "SPROUTY-2 and E-cadherin regulate reciprocally and dictate colon cancer cell tumourigenicity." in: **Oncogene**, Vol. 29, Issue 34, pp. 4800-13, (2010) ([PubMed](#)).



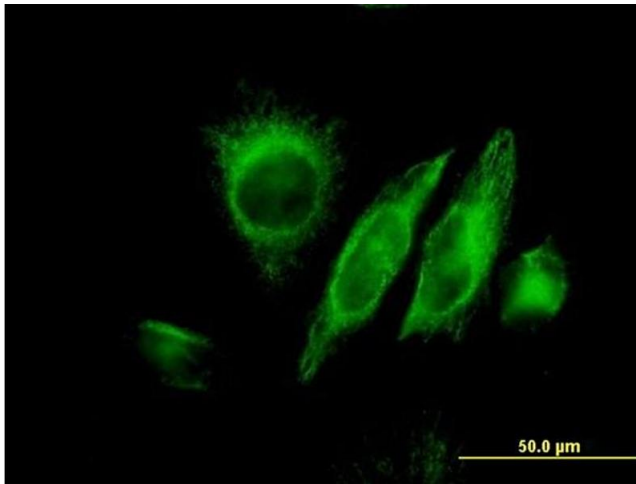
Immunostaining

Image 1. Immunoperoxidase of monoclonal antibody to SPRY2 on formalin-fixed paraffin-embedded human lymphoma. [antibody concentration 3 ug/ml]



Western Blotting

Image 2. SPRY2 monoclonal antibody (M01), clone 1E10 Western Blot analysis of SPRY2 expression in C32 .



Immunofluorescence

Image 3. Immunofluorescence of monoclonal antibody to SPRY2 on HeLa cell. [antibody concentration 25 ug/ml]

Please check the [product details page](#) for more images. Overall 6 images are available for ABIN564439.