



[Go to Product page](#)

Datasheet for ABIN564456

anti-AKAP8 antibody (AA 551-662)

7 Images

Overview

Quantity:	100 µg
Target:	AKAP8
Binding Specificity:	AA 551-662
Reactivity:	Human
Host:	Mouse
Clonality:	Monoclonal
Conjugate:	This AKAP8 antibody is un-conjugated
Application:	Western Blotting (WB), ELISA, Immunofluorescence (IF), Immunohistochemistry (Paraffin-embedded Sections) (IHC (p)), Immunoprecipitation (IP)

Product Details

Purpose:	Mouse monoclonal antibody raised against a partial recombinant AKAP8.
Immunogen:	AKAP8 (NP_005849, 551 a.a. ~ 662 a.a) partial recombinant protein with GST tag. MW of the GST tag alone is 26 KDa.
Sequence:	VDPEMEGDDN LGGEDKKETP EEVAADVLA E VITAAVRAVD GEGAPAP E S S G E P A E D E G P T DTAEAGSDPQ AEQLLEEQVP CGTAHEKGV P KARSEAAEAG NGAETMAAEA ES
Clone:	3D4
Isotype:	IgG2a
Cross-Reactivity:	Human
Characteristics:	Antibody Reactive Against Recombinant Protein.

Target Details

Target:	AKAP8
Alternative Name:	AKAP8 (AKAP8 Products)
Background:	Full Gene Name: A kinase (PRKA) anchor protein 8 Synonyms: AKAP95,DKFZp586B1222
Gene ID:	10270
NCBI Accession:	NM_005858
Pathways:	SARS-CoV-2 Protein Interactome

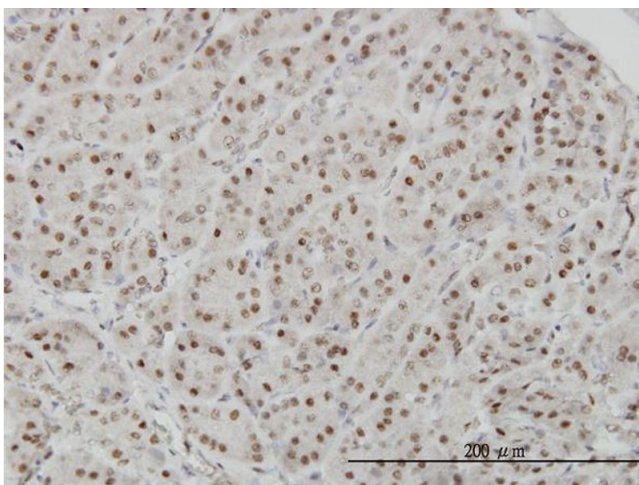
Application Details

Application Notes:	Optimal working dilution should be determined by the investigator.
Restrictions:	For Research Use only

Handling

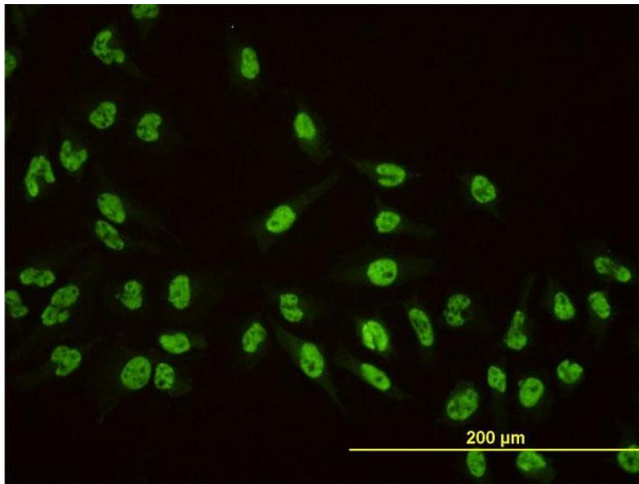
Buffer:	In 1x PBS, pH 7.4
Handling Advice:	Aliquot to avoid repeated freezing and thawing.
Storage:	-20 °C
Storage Comment:	Store at -20°C or lower. Aliquot to avoid repeated freezing and thawing.

Images



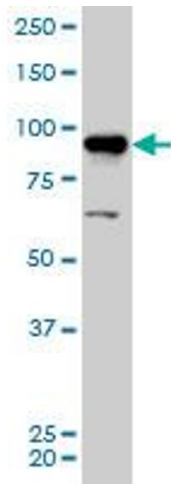
Immunostaining

Image 1. Immunoperoxidase of monoclonal antibody to AKAP8 on formalin-fixed paraffin-embedded human pancreas. [antibody concentration 3 ug/ml]



Immunofluorescence

Image 2. Immunofluorescence of monoclonal antibody to AKAP8 on HeLa cell. [antibody concentration 10 ug/ml]



Western Blotting

Image 3. AKAP8 monoclonal antibody (M01), clone 3D4 Western Blot analysis of AKAP8 expression in HeLa S3 NE .

Please check the [product details page](#) for more images. Overall 7 images are available for ABIN564456.