



[Go to Product page](#)

Datasheet for ABIN564482
anti-LANCL1 antibody (AA 1-58)

2 Images

Overview

Quantity:	100 µg
Target:	LANCL1
Binding Specificity:	AA 1-58
Reactivity:	Human
Host:	Mouse
Clonality:	Monoclonal
Conjugate:	This LANCL1 antibody is un-conjugated
Application:	ELISA, Western Blotting (WB)

Product Details

Purpose:	Mouse monoclonal antibody raised against a partial recombinant LANCL1.
Immunogen:	LANCL1 (NP_006046, 1 a.a. ~ 58 a.a) partial recombinant protein with GST tag. MW of the GST tag alone is 26 KDa.
Sequence:	MAQRAFPNPY ADYNKSLAEG YFDAAGRLTP EFSQRLTNKI RELLQQMERG LKSADPRD
Clone:	9A12
Isotype:	IgG2a
Cross-Reactivity:	Human
Characteristics:	Antibody Reactive Against Recombinant Protein.

Target Details

Target:	LANCL1
Alternative Name:	LANCL1 (LANCL1 Products)
Background:	Full Gene Name: LanC lantibiotic synthetase component C-like 1 (bacterial) Synonyms: GPR69A,p40
Gene ID:	10314
NCBI Accession:	NM_006055

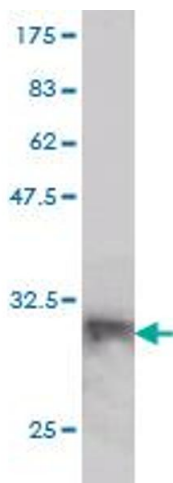
Application Details

Application Notes:	Optimal working dilution should be determined by the investigator.
Restrictions:	For Research Use only

Handling

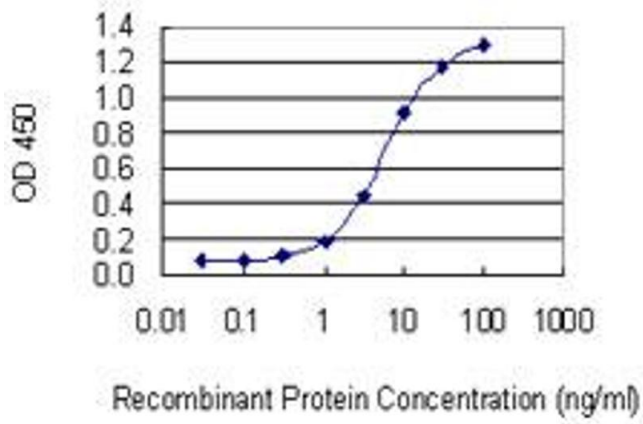
Buffer:	In 1x PBS, pH 7.4
Handling Advice:	Aliquot to avoid repeated freezing and thawing.
Storage:	-20 °C
Storage Comment:	Store at -20°C or lower. Aliquot to avoid repeated freezing and thawing.

Images



Western Blotting

Image 1. Western Blot detection against Immunogen (32.12 KDa) .



ELISA

Image 2. Detection limit for recombinant GST tagged LANCL1 is 0.3 ng/ml as a capture antibody.