

Datasheet for ABIN564490

**anti-C-Type Lectin Domain Family 4, Member M (CLEC4M) (AA 285-394) antibody**[Go to Product page](#)**2** Images

## Overview

Quantity:	100 µg
Target:	C-Type Lectin Domain Family 4, Member M (CLEC4M)
Binding Specificity:	AA 285-394
Reactivity:	Human
Host:	Mouse
Clonality:	Monoclonal
Conjugate:	Un-conjugated
Application:	Western Blotting (WB), ELISA

## Product Details

Purpose:	Mouse monoclonal antibody raised against a partial recombinant CLEC4M.
Immunogen:	CLEC4M (NP_055072, 285 a.a. ~ 394 a.a) partial recombinant protein with GST tag. MW of the GST tag alone is 26 KDa.
Sequence:	SQRNWHDSVT ACQEVRAQLV VIKTAEEQNF LQLQTSRSNR FSWMGLSDLN QEGTWQWVDG SPLSPSFQRY WNSGEPNNSG NEDCAEFSGS GWNDNRCDVD NYWICKKPAA
Clone:	2G1
Isotype:	IgG3
Cross-Reactivity:	Human
Characteristics:	Antibody Reactive Against Recombinant Protein.

## Target Details

Target:	C-Type Lectin Domain Family 4, Member M (CLEC4M)
Alternative Name:	CLEC4M ( <a href="#">CLEC4M Products</a> )
Background:	Full Gene Name: C-type lectin domain family 4, member M Synonyms: CD209L,CD299,DC-SIGN2,DC-SIGNR,DCSIGNR,HP10347,L-SIGN,LSIGN,MGC129964,MGC47866
Gene ID:	10332
NCBI Accession:	<a href="#">NM_014257</a>

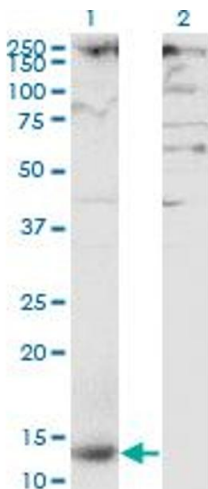
## Application Details

Application Notes:	Optimal working dilution should be determined by the investigator.
Restrictions:	For Research Use only

## Handling

Buffer:	In 1x PBS, pH 7.4
Handling Advice:	Aliquot to avoid repeated freezing and thawing.
Storage:	-20 °C
Storage Comment:	Store at -20°C or lower. Aliquot to avoid repeated freezing and thawing.

## Images

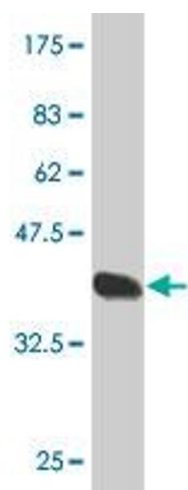


**Western Blotting**

**Image 1.** Western Blot analysis of CLEC4M expression in transfected 293T cell line by CLEC4M monoclonal antibody (M01), clone 2G1.

Lane 1: CLEC4M transfected lysate (Predicted MW: 12.21 kDa).

Lane 2: Non-transfected lysate.



Western Blotting

**Image 2.** Western Blot detection against Immunogen (37.84 kDa) .