



[Go to Product page](#)

Datasheet for ABIN564542

anti-CDC42EP2 antibody (AA 102-210)

2 Images

1 Publication

Overview

Quantity:	100 µg
Target:	CDC42EP2
Binding Specificity:	AA 102-210
Reactivity:	Human
Host:	Mouse
Clonality:	Monoclonal
Conjugate:	This CDC42EP2 antibody is un-conjugated
Application:	ELISA, Western Blotting (WB)

Product Details

Purpose:	Mouse monoclonal antibody raised against a partial recombinant CDC42EP2.
Immunogen:	CDC42EP2 (NP_006770, 102 a.a. ~ 210 a.a) partial recombinant protein with GST tag. MW of the GST tag alone is 26 KDa.
Sequence:	PLLKNAISLP VIGGPQALTL PTAQAPPKPP RLHLETPQPS PQEGGSVDIW RIPETGSPNS GLTPESGAEE PFLSNASSLL SLHVDLGPSI LDDVLQIMDQ DLDSMQIPT
Clone:	2H7
Isotype:	IgG1
Cross-Reactivity:	Human
Characteristics:	Antibody Reactive Against Recombinant Protein.

Target Details

Target:	CDC42EP2
Alternative Name:	CDC42EP2 (CDC42EP2 Products)
Background:	Full Gene Name: CDC42 effector protein (Rho GTPase binding) 2 Synonyms: BORG1,CEP2
Gene ID:	10435
NCBI Accession:	NM_006779
Pathways:	Regulation of Actin Filament Polymerization

Application Details

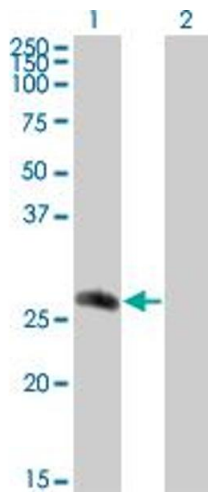
Application Notes:	Optimal working dilution should be determined by the investigator.
Restrictions:	For Research Use only

Handling

Buffer:	In 1x PBS, pH 7.4
Handling Advice:	Aliquot to avoid repeated freezing and thawing.
Storage:	-20 °C
Storage Comment:	Store at -20°C or lower. Aliquot to avoid repeated freezing and thawing.

Publications

Product cited in:	Schnack, Danzer, Hengerer, Gillardon: "Protein array analysis of oligomerization-induced changes in alpha-synuclein protein-protein interactions points to an interference with Cdc42 effector proteins." in: Neuroscience , Vol. 154, Issue 4, pp. 1450-7, (2008) (PubMed).
-------------------	-------------------------------------------------------------------------------------------------------------------------------------------------------------------------------------------------------------------------------------------------------------------------------------------------------

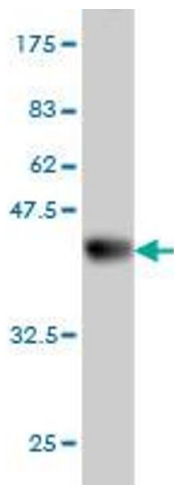


Western Blotting

Image 1. Western Blot analysis of CDC42EP2 expression in transfected 293T cell line by CDC42EP2 monoclonal antibody (M01), clone 2H7.

Lane 1: CDC42EP2 transfected lysate(22.5 KDa).

Lane 2: Non-transfected lysate.



Western Blotting

Image 2. Western Blot detection against Immunogen (37.73 KDa) .