



[Go to Product page](#)

Datasheet for ABIN564544
anti-C1D antibody (AA 1-141)

7 Images

Overview

Quantity:	100 µg
Target:	C1D
Binding Specificity:	AA 1-141
Reactivity:	Human
Host:	Mouse
Clonality:	Monoclonal
Conjugate:	This C1D antibody is un-conjugated
Application:	ELISA, Western Blotting (WB), Immunofluorescence (IF), Immunohistochemistry (Paraffin-embedded Sections) (IHC (p))

Product Details

Purpose:	Mouse monoclonal antibody raised against a full length recombinant C1D.
Immunogen:	C1D (AAH05235, 1 a.a. ~ 141 a.a) full-length recombinant protein with GST tag. MW of the GST tag alone is 26 KDa.
Sequence:	MAGEEINEDY PVEIHEYLSA FENSIGAVDE MLKTMMSSVSR NELLQKLDPL EQAKVDLVSA YTLNSMFWVY LATQGVNPK EHPVKQELERI RYVMNRVKEI TDKKKAGKLD RGAASRFVKN ALWEPKSKNA SKVANKGKSK S
Clone:	6H2
Isotype:	IgG2a
Cross-Reactivity:	Human

Product Details

Characteristics: Antibody Reactive Against Recombinant Protein.

Target Details

Target: C1D

Alternative Name: C1D ([C1D Products](#))

Background: Full Gene Name: nuclear DNA-binding protein
Synonyms: MGC12261,MGC14659,SUNCOR

Gene ID: 10438

Application Details

Application Notes: Optimal working dilution should be determined by the investigator.

Restrictions: For Research Use only

Handling

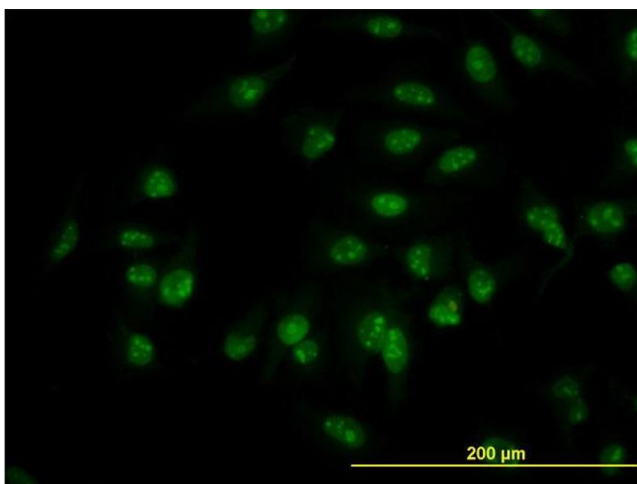
Buffer: In 1x PBS, pH 7.4

Handling Advice: Aliquot to avoid repeated freezing and thawing.

Storage: -20 °C

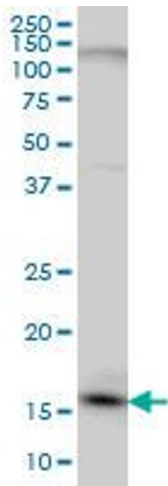
Storage Comment: Store at -20°C or lower. Aliquot to avoid repeated freezing and thawing.

Images



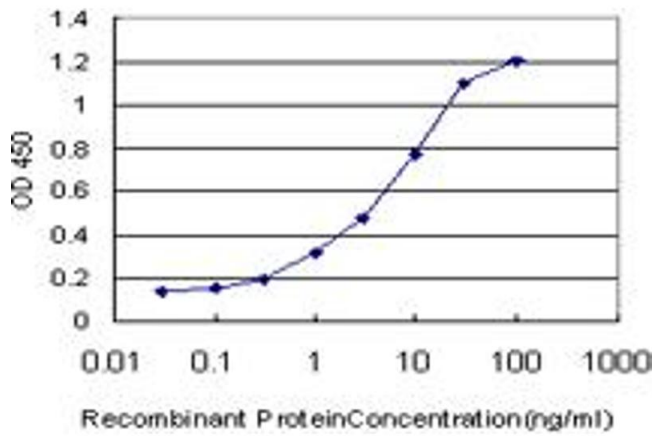
Immunofluorescence

Image 1. Immunofluorescence of monoclonal antibody to C1D on HeLa cell. [antibody concentration 10 ug/ml]



Western Blotting

Image 2. C1D monoclonal antibody (M03), clone 6H2 Western Blot analysis of C1D expression in HeLa .



ELISA

Image 3. Detection limit for recombinant GST tagged C1D is approximately 0.1ng/ml as a capture antibody.

Please check the [product details page](#) for more images. Overall 7 images are available for ABIN564544.